



*m*  
michaelpaulholidays.co.uk

2019



*'Best in Class' Provider of UK Self Catering Holidays*

2019 ★★★★★ feefo<sup>co</sup>  
Gold Trusted Service Award



2019 ★★★★★ feefo  
Gold Trusted Service Award

Our high standards for quality, service and security are why we have a 5-star rating on the independent review website Feefo, as well as having won their Gold Trusted Service Award for excellence in customer service throughout 2018

# The UK self catering holiday company you can trust

## Quality

We personally inspect every property we list, ensuring it meets the standards we know our customers expect. We only take on the very best 4 and 5 star accommodation, so you can rest assured that you're getting handpicked quality.

## Service

We know that every detail makes a difference when you're on holiday, so we pay attention to everything, from the big picture to the finishing touches. We want everything to be perfect for you, so nothing is too much trouble for us.

## Security

We offer complete peace of mind with your booking: your stay is secured the instant you pay your deposit online, and you can give us a call any day of the week.

## Price Promise

You're guaranteed the best price when you book with us. We're so confident about our price promise that we'll refund the difference if you find the same holiday cheaper elsewhere



# Contents

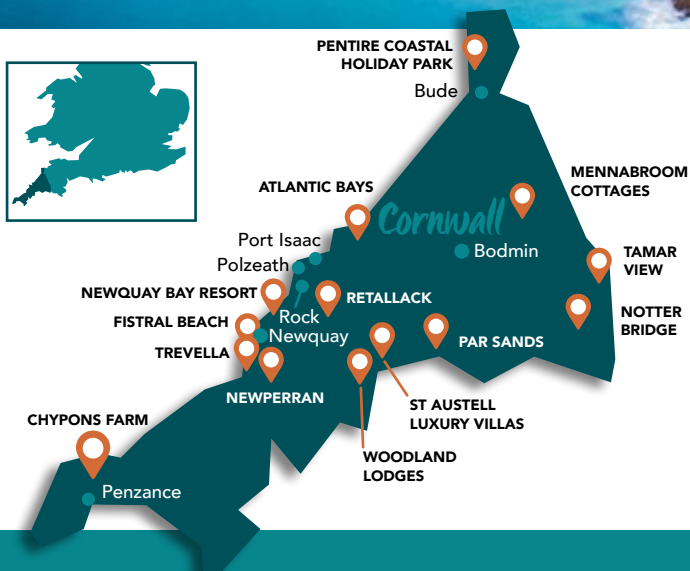
<b>Cornwall</b>	<b>5</b>
<b>The Cotswolds</b>	<b>22</b>
<b>Derbyshire</b>	<b>27</b>
<b>Devon</b>	<b>30</b>
<b>Dorset</b>	<b>36</b>
<b>Herefordshire</b>	<b>42</b>
<b>The Isle Of Wight</b>	<b>46</b>
<b>Lincolnshire</b>	<b>50</b>
<b>London &amp; The Home Counties</b>	<b>52</b>
<b>Norfolk</b>	<b>58</b>
<b>Scotland</b>	<b>62</b>
<b>Somerset</b>	<b>80</b>
<b>Suffolk</b>	<b>84</b>
<b>Wales</b>	<b>88</b>
<b>Yorkshire</b>	<b>92</b>



 [michaelpaulholidays.co.uk](http://michaelpaulholidays.co.uk)

Call **01275 371133** to book





Cornwall is the UK's best-loved holiday destination and it's not hard to understand why. Located at the most southerly part of Great Britain, with 300 miles of glorious coastal scenery, the county is a holidaymaker's paradise. The region is popular all year round for short breaks or long weekends. Many families choose to spend their main summer break here. There is also a fantastic selection of quality holiday cottages to choose from, which goes some way to explaining why Cornwall is the UK's most popular holiday destination.

Cornwall's spectacular landscape and moderate weather provides the ideal setting for long country walks, sunbathing on the beach and surfing

the waves. The beautiful beaches and excellent surfing conditions attract thousands of tourists and watersports enthusiasts to the area each year. Some of the best surfing beaches are near Polzeath, Newquay and Looe. The natural beauty of the county and its limitless options for food, culture and entertainment make it the obvious choice for a holiday in the UK.

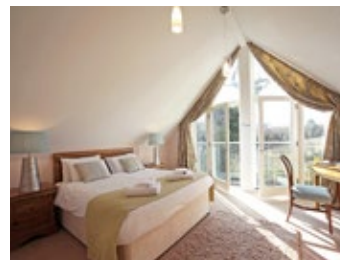
We offer a wide variety of properties throughout Cornwall, including cottages, caravans and apartments. Whether you're headed to Cornwall for a family holiday, a romantic escape, or as a group of friends taking a break together, we're sure you'll find something to suit your needs.

# St Austell Luxury Villas

## ST AUSTELL

These luxuriously appointed holiday villas occupy a great location in the peaceful settlement of Trewiddle, just a couple of miles from the bustling market town of St Austell. You'll find quintessential fishing villages such as Padstow, Fowey and Mevagissey nearby, as well as a whole host of stunning beaches and attractions within easy reach. The coastline in the area is among the most beautiful in Cornwall and is often referred to as the Cornish Riviera.

The holiday villas themselves are reason enough to visit, with large living spaces, private outdoor decking and large balconies leading off the master bedroom. With the largest property sleeping up to 7, this resort is perfect for a family holiday in Cornwall. There are some wonderful on-site woodland trails and an outdoor playground for the children.



### GREAT FOR...

Local beaches  
Beautiful grounds  
Exploring Cornwall



### NEARBY...

Lost Gardens of Heligan  
St Austell Brewery  
Caerhays Castle



St Austell Luxury Villas	SPRING prices from		SUMMER prices from		AUTUMN prices from		WINTER prices from	
	4 Nights	7 Nights	4 Nights	7 Nights	4 Nights	7 Nights	4 Nights	7 Nights
2 Bed Cottage	£552	£762	£762	£1,003	£726	£1,003	£377	£520
3 Bed Villa	£668	£922	£1,069	£2,075	£668	£922	£458	£634
4 Bed Villa	£834	£1,133	£1,256	£2,200	£834	£1,182	£585	£790



pet  
friendly



child  
friendly



luxury



## Chypons Farm

### ST IVES

Situated in a glorious wooded valley on the edge of the little village of Nancledra, a tranquil rural setting in Cornwall that's still conveniently close to the coast and just 3 miles from St Ives, Chypons Farm provides comfortable, traditional accommodation that's perfect for taking a break in scenic surroundings.

The four comfortable cottages at Chypons Farm have been converted from 300-year-old granite farm buildings, and still retain their classic charm and plenty of original features to make your stay really special. There's ample room to relax on sunny days in the beautiful shared garden, which comes complete with its own summerhouse.

★ **GREAT FOR...**  
Rural relaxation  
Visiting the coast  
Local attractions

📍 **NEARBY...**  
St Ives  
Penzance  
St Michael's Mount



child friendly



countryside



pet friendly

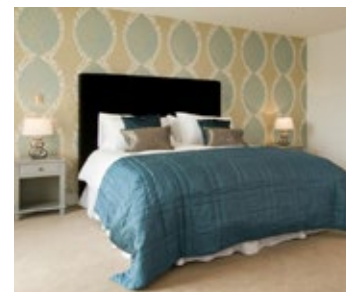
Chypons Farm 	SPRING prices from		SUMMER prices from		AUTUMN prices from		WINTER prices from	
	4 Nights	7 Nights	4 Nights	7 Nights	4 Nights	7 Nights	4 Nights	7 Nights
Farm Cottage (Sleeps 6)	£567	£809	£829	£1,139	£381	£489	£272	£389
River Cottage (Sleeps 3)	£489	£549	£506	£879	£413	£418	£249	£318
The Barn (Sleeps 3)	£518	£599	£529	£879	£429	£439	£264	£339
Waterside Cottage (Sleeps 4)	£489	£549	£725	£929	£389	£419	£264	£339

## Fistral Beach Apartments

### NEWQUAY

These luxury coastal apartments are situated on the Pentire Peninsula in Newquay, overlooking the famous Fistral Beach. The beach is one of Cornwall's most popular seaside holiday destinations and is well known for being among the best surfing spots in the UK.

With wonderful sea views and a convenient location for exploring Newquay, this accommodation offers a high quality stay with private parking included.



★ **GREAT FOR...**  
Sun, sea and surf  
Seafood restaurants  
Newquay town

📍 **NEARBY...**  
Newquay Golf Club  
Blue Reef Aquarium  
Oasis Fun Pools



beach nearby



WiFi available



accessible

### Fistral Beach Apartments



	SPRING prices from		SUMMER prices from		AUTUMN prices from		WINTER prices from	
	4 Nights	7 Nights	4 Nights	7 Nights	4 Nights	7 Nights	4 Nights	7 Nights
1 Bed Apartment	£553	£990	N/A	£1,668	£716	£1,055	£391	£540
3 Bed Apartment	£772	£1,067	N/A	£2,241	£828	£1,200	£546	£753





★ **GREAT FOR...**  
 Countryside walks  
 Rural relaxation  
 Exploring Devon and Cornwall

📍 **NEARBY...**  
 St. Neot village  
 The Eden Project  
 Jamaica Inn

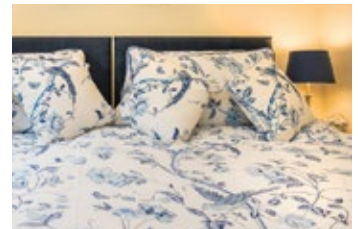
🐾 **pet friendly**    📶 **WiFi available**    🌿 **countryside**

## Mennabroom Cottages

### BODMIN

Mennabroom is a historic country estate consisting of a 14th-century Grade II listed farmhouse and three charming holiday cottages converted from traditional stone outbuildings. Lying on the southern edge of Bodmin Moor in 40 acres of grounds, this is the perfect rustic retreat for those seeking a relaxing getaway.

The child and dog friendly accommodation blends modern convenience with traditional charm to guarantee a comfortable stay. The extensive grounds are free for guests to explore, and the estate is close to a number of excellent walking trails.



Mennabroom Cottages	BEST PRICE		SPRING prices from		SUMMER prices from		AUTUMN prices from		WINTER prices from	
	4 Nights	7 Nights	4 Nights	7 Nights	4 Nights	7 Nights	4 Nights	7 Nights	4 Nights	7 Nights
1 Bed Cottage	£374	£468	£568	£709	£423	£528	£338	£421		
2 Bed Cottage	£439	£549	£766	£957	£341	£425	£366	£456		
3 Bed Cottage	£518	£648	£961	£1,201	£507	£686	£423	£528		

# Newquay Bay Resort

## NEWQUAY

Just a couple of miles from the bustling coastal town of Newquay, Newquay Bay Resort boasts a tranquil countryside location in a gorgeous valley, making it the perfect place to get away from it all without missing out on popular Cornish seaside destinations.





You don't need to leave the resort to have a good time, though, with indoor and outdoor swimming pools, a restaurant and café, and a playground for the little ones. Experience refreshing relaxation with the sauna and steam rooms and the hair and beauty salon, or sit back and enjoy a wide variety of live entertainment from the packed schedule. There's even an on-site surf school that will whisk you away to Watergate Bay so you can try your hand at riding the waves.



Newquay Bay Resort 	SPRING prices from		SUMMER prices from		AUTUMN prices from		WINTER prices from	
	4 Nights	7 Nights	4 Nights	7 Nights	4 Nights	7 Nights	4 Nights	7 Nights
2 Bed Comfort Caravan	£221	£315	£260	£434	£221	£315	£168	£236
2 Bed Comfort Plus Caravan	£227	£324	£278	£464	£227	£324	£177	£249
2 Bed Superior Caravan	£244	£349	£290	£483	£244	£349	£188	£265
3 Bed Superior Caravan	£270	£386	£330	£550	£270	£386	£206	£290
2 Bed Superior Plus Caravan	£259	£370	£305	£508	£259	£370	£197	£277
3 Bed Superior Plus Caravan	£282	£403	£340	£567	£282	£403	£214	£302

★ **GREAT FOR...**  
Coastal breaks  
On-site facilities  
Learning to surf

📍 **NEARBY...**  
Porth Beach  
Watergate Bay  
Newquay

 sauna
  pool
  bar / restaurant
  beach nearby

## Newperran

### NEWQUAY

This peaceful holiday resort is situated in a quiet, beautiful area of Cornish countryside, but is still conveniently close by to the bustling beaches of the seaside town of Newquay. It's a perfect place to stay for visiting the coast and local landmarks.

If you'd rather spend some time on the resort, there's plenty to do here, as well, with an indoor heated swimming pool, an adventure playground for little ones, and even a fantastic skate park. At the end of the day, retire to the Hillview for drinks and delicious meals.



- ★ **GREAT FOR...**  
 Countryside views  
 Family fun  
 On-site amenities

- 📍 **NEARBY...**  
 Newquay beaches  
 Eden Project  
 Cornish coastline



pet friendly



pool



bar / restaurant



Newperran			SPRING prices from		SUMMER prices from		AUTUMN prices from		WINTER prices from	
	4 Nights	7 Nights	4 Nights	7 Nights	4 Nights	7 Nights	4 Nights	7 Nights		
Superior 2 Bed Caravan	£181	£321	£575	£1,028	£179	£299	£110	£184		
Superior 3 Bed Caravan	£219	£366	£675	£1,205	£208	£346	£123	£205		



## Notter Bridge

SALTASH

Based within 11 acres of unspoilt riverside and woodland landscape in a sheltered valley, Notter Bridge is perfect for watching wildlife, fishing in the private lakes or the River Lynher, or setting off from the slipway for a day of boating. Take a break in a spacious modern lodge with scenic views.



★ **GREAT FOR...**  
Wildlife watching  
Fishing  
Rural relaxation

📍 **NEARBY...**  
Looe  
Tamar Valley  
Whitsand Bay



fishing



countryside



walking

### Notter Bridge



2 Bed Luxury Lodge

**SPRING**  
prices from

**SUMMER**  
prices from

**AUTUMN**  
prices from

**WINTER**  
prices from

	SPRING prices from		SUMMER prices from		AUTUMN prices from		WINTER prices from	
	4 Nights	7 Nights	4 Nights	7 Nights	4 Nights	7 Nights	4 Nights	7 Nights
2 Bed Luxury Lodge	£339	£558	£613	£972	£339	£558	£282	£473

## Tamar View

ST ANN'S CHAPEL

With panoramic views of the landscapes of the Tamar Valley Area of Outstanding Natural Beauty, the beautifully maintained Tamar View Holiday Park takes full advantage of its unspoilt setting. We offer a comfortable caravan with luxurious touches like a large wrap-around decking area, complete with barbecue.



★ **GREAT FOR...**  
Unbeatable views  
Tranquil surroundings  
Walking

📍 **NEARBY...**  
Tamar Valley  
Dartmoor National Park  
Plymouth



countryside



walking



### Tamar view



2 Bed Luxury Caravan

**SPRING**  
prices from

**SUMMER**  
prices from

**AUTUMN**  
prices from

**WINTER**  
prices from

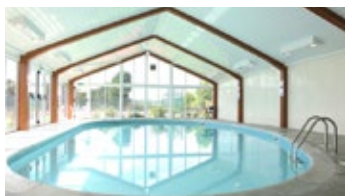
	SPRING prices from		SUMMER prices from		AUTUMN prices from		WINTER prices from	
	4 Nights	7 Nights	4 Nights	7 Nights	4 Nights	7 Nights	4 Nights	7 Nights
2 Bed Luxury Caravan	£200	£306	£461	£744	£200	£306	£165	£258

## Par Sands

### ST AUSTELL

Par Sands is a superb Cornish resort which is situated right on the coast. This 5-star holiday park is located just next to Par Beach, making it perfect for anyone looking to take a break by the sea, and the beach is dog friendly so you can even bring the family pet.

On the resort you'll find a swimming pool, a mini putting green, a multi-use sports court, an adventure playground and a freshwater wildlife lake. There's also a welcoming pub within easy walking distance of the park, just a short distance off the beach.



★ **GREAT FOR...**  
Fun on the beach  
Sports and games  
A break with the kids

📍 **NEARBY...**  
The Eden Project  
Flambards Theme Park  
Camel Valley Vineyard



pool



tennis



beach  
nearby

Par Sands Coastal Holiday Park	BEST PRICE Guaranteed		SPRING prices from		SUMMER prices from		AUTUMN prices from		WINTER prices from	
	4 Nights	7 Nights	4 Nights	7 Nights	4 Nights	7 Nights	4 Nights	7 Nights	4 Nights	7 Nights
2 Bed Gold Caravan	£240	£442	£592	£885	£240	£442	£240	£442	£240	£442
3 Bed Gold Caravan	£262	£487	£630	£960	£262	£487	£262	£487	£262	£487
2 Bed Platinum Caravan	£267	£488	£647	£975	£267	£488	£267	£488	£267	£488
3 Bed Platinum Caravan	£292	£540	£697	£1,080	£292	£540	£292	£540	£292	£540
2 Bed Luxury Lodge	£637	£1,050	£787	£1,200	£285	£570	£285	£570	£285	£570



## Pentire Coastal Park

### BUDE

Located a 5-minute drive from the beautiful beaches of Bude, Pentire Coastal Holiday Park is the ideal place for a break in Cornwall. You can unwind in a spacious modern holiday home in peaceful surroundings, with the striking scenery of the coast within easy distance.

The local village of Kilkhampton with its pubs and restaurants is just 15 minutes' walk away, and easy access to the A39 lets you easily explore by car the many attractions Cornwall has to offer.

★ **GREAT FOR...**

Seaside fun  
Walking trails  
Fishing excursions

📍 **NEARBY...**

Kilkhampton village  
Tintagel Castle  
Milky Way Adventure Park



pet friendly



parking




beach nearby



countryside



Pentire Coastal Park 	SPRING prices from		SUMMER prices from		AUTUMN prices from		WINTER prices from	
	4 Nights	7 Nights	4 Nights	7 Nights	4 Nights	7 Nights	4 Nights	7 Nights
2 Bed Gold Caravan	£210	£300	£442	£720	£202	£255	£165	£255
3 Bed Gold Caravan	£240	£345	£520	£870	£277	£345	£210	£345



## Vercana at Retallack Resort

ST COLUMB

Retallack has something for everyone, whether you'd rather spend your break unwinding in luxury or get your pulse pounding with exciting sports and activities. Try a range of exciting watersports including wakeboarding, zorbing and stand-up paddleboarding, or tackle the Total Wipeout-style Aqua Park assault course. You can even give surfing a go on Cornwall's only surf simulator, the FlowRider. There's also great fishing lakes, a luxurious spa, and on-site activities and entertainment.

Exclusive to Michael Paul Holidays, the fantastic Vercana lodge is a stylish holiday property that comes complete with its own luxurious hot tub. With space to sleep up to 4 guests, it's the ideal accommodation for a stay at this superb resort.



*"It was a perfect week's holiday. We would definitely return to the lodge & Retallack Resort."*



### GREAT FOR...

- ★ Watersports
- ★ Fishing lakes
- ★ Spa treatments

### NEARBY...

- 📍 Lusty Glaze Beach
- 📍 Blue Reef Aquarium
- 📍 Cornwall Aviation Heritage Centre



bar / restaurant



pool



hot tubs

Vercana at Retallack Resort



	SPRING prices from		SUMMER prices from		AUTUMN prices from		WINTER prices from	
	4 Nights	7 Nights	4 Nights	7 Nights	4 Nights	7 Nights	4 Nights	7 Nights
2 Bed Luxury Lodge with Hot Tub	£498	£935	N/A	£1,275	£498	£935	£437	£808

# Rock & North Cornwall Collection

For the best that Cornwall has to offer, Rock and the surrounding area make for an ideal holiday destination. Explore the Cornish coast, countryside, villages and towns - there's something to do for everyone and you'll never run low on spectacular sights and amazing attractions.

The pictures shown here are just a sample of our range of properties in the area. In total we have 31 fantastic holiday cottages in North Cornwall in a number of popular locations - give us a call or check our website to find out more.



Little Gull Cottage, Polzeath



Curlews Cwtch, Roserrow



Pentewan, Polzeath



Cranfield, Polzeath

- ★ **GREAT FOR...**
- Coastal breaks
- Country walks
- Natural beauty

- 📍 **NEARBY...**
- Camel Creek Adventure Park
- Cornwall at War Museum
- Padstow Brewing Company



pet friendly



WiFi available



beach nearby



The Manor House, Port Isaac



Spring Barn, Rock



The Roundhouse, Roserrow





Burlorne, Rock



Silvershells, Port Isaac



Spring Barn, Rock



Little Gull Cottage, Polzeath



Curlews Cwtch, Roserow

Rock & North Cornwall Collection	SPRING prices from		SUMMER prices from		AUTUMN prices from		WINTER prices from	
	4 Nights	7 Nights	4 Nights	7 Nights	4 Nights	7 Nights	4 Nights	7 Nights
1 Bed House	£497	£691	£550	£898	£497	£691	£404	£559
2 Bed House	£704	£987	£610	£1,250	£542	£902	£599	£837
3 Bed House	£489	£758	£634	£1,395	£669	£793	£489	£678
4 Bed House	£587	£904	£1,923	£2,012	£912	£968	£587	£818
5 Bed House	£730	£1,311	N/A	£2,274	£930	£1,279	£765	£1,024
6 Bed House	£785	£1,311	N/A	£2,550	£950	£1,334	£785	£1,096

# Atlantic Bays Holiday Park

## PADSTOW

Atlantic Bays boasts a wonderful location on Cornwall's north coast, in close proximity to a range of beautiful bays and amazing attractions. It's just 4 miles to the attractive port town of Padstow, with its thriving fishing industry, famous restaurants, and seven sparkling beaches close at hand. Take a break in one of the luxurious 3-bed lodges we have available for a really refreshing Cornish break.

The resort itself has everything you need to make your stay a pleasant one. There's a well-stocked shop with all the essentials you need, as well as local produce and treats. Enjoy a drink in the Conservatory Bar, or head to the restaurant for regular offers on fantastic food. And children will find plenty to occupy themselves, with a playground, a games room, and a field for ball games.



- ★ **GREAT FOR...**
- On-site facilities
- Coastal trips
- Family fun

- 📍 **NEARBY...**
- Fistral Beach
- South West Coast Path
- Port Isaac village



child friendly



bar / restaurant



parking

Atlantic Bays  
Holiday Park



Atlantic Bays Holiday Park	SPRING prices from		SUMMER prices from		AUTUMN prices from		WINTER prices from	
	4 Nights	7 Nights	4 Nights	7 Nights	4 Nights	7 Nights	4 Nights	7 Nights
3 Bed Luxury Lodge	£506	£680	£600	£990	£612	£935	£560	£845

## Trevella Park NEWQUAY

Trevella Park is a 5-star resort that offers some of the best holiday experiences in Cornwall, situated close by to the superbly sandy Crantock Beach and the bustling seaside town of Newquay - an unbeatable location for an unforgettable seaside break.

The park is home to an amazing range of fun facilities, including an outdoor swimming pool, two well-stocked fishing lakes, adventure playgrounds, a crazy golf course, and plenty of open space to enjoy. Kids' activity sessions also run daily during school holidays. For the convenience of guests, there's also an on-site bar, a small shop, and a laundrette.

A variety of accommodation is available, including pet-friendly options and properties with hot tubs. Choose from comfy caravans, high-end lodges, and glamping options including safari tents and geo-domes.



Superior Caravan



Safari Tent Lodge

**★ GREAT FOR...**  
Seaside holidays  
On-site facilities  
Summer activities

**📍 NEARBY...**  
Newquay Zoo  
Fistral Beach  
Blue Reef Aquarium



pool




child friendly



beach nearby



fishing

Trevella Park 	SPRING prices from		SUMMER prices from		AUTUMN prices from		WINTER prices from	
	4 Nights	7 Nights	4 Nights	7 Nights	4 Nights	7 Nights	4 Nights	7 Nights
Comfort Caravan 2 Bed (Sleeps 6)	£217	£289	£739	£984	£262	£313	£202	£270
Comfort Caravan 3 Bed (Sleeps 8)	£233	£310	£794	£1,058	£282	£336	£218	£290
Superior Caravan 2 Bed (Sleeps 6)	£275	£367	£938	£1,251	£333	£398	£257	£343
Superior Caravan 3 Bed (Sleeps 8)	£322	£429	£1,098	£1,463	£390	£465	£301	£400
Luxury Caravan 2 Bed (Sleeps 6)	£235	£313	£800	£1,067	£284	£339	£220	£292
Luxury Caravan 2 Bed (Sleeps 8)	£272	£362	£925	£1,233	£328	£392	£253	£338
Lodge 2 Bed with Hot Tub (Sleeps 6)	£363	£838	£806	£1,647	£564	£749	£338	£451
Safari Lodge 2 Bed (Sleeps 5)	£356	£458	£780	£1,040	£371	£458	n/a	n/a
Safari 2 Bed Tent Lodge (Sleeps 6)	£496	£693	£1,063	£1,417	£652	£724	n/a	n/a

★ **GREAT FOR...**  
Sports, swimming and spa  
Natural surroundings  
Coastal excursions

📍 **NEARBY...**  
St Austell  
Charlestown Harbour  
Porfell Wildlife Park



pet friendly



hot tubs



pool

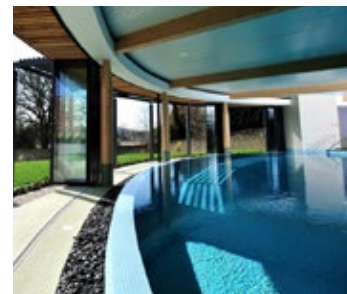



## Woodland Lodges

**AT THE CORNWALL HOTEL, ST AUSTELL**

The Cornwall Estate lies in the countryside just outside the lively market town of St Austell, with a range of comfortable lodges to stay in. There's plenty to do on this beautiful parkland resort, with a swimming pool, a spa, two tennis courts, a gym, and plenty of green space to enjoy, as well as an on-site restaurant.

If you'd rather explore the local area, you'll find all sorts of things to see and do, with exquisite beaches and bays, quaint villages and traditional local pubs all within easy reach.



The Cornwall Hotel & Spa Estate 	SPRING prices from		SUMMER prices from		AUTUMN prices from		WINTER prices from	
	4 Nights	7 Nights	4 Nights	7 Nights	4 Nights	7 Nights	4 Nights	7 Nights
2 Bed Gold Woodland Lodge	£650	£1,107	N/A	£2,256	£833	£1,090	£602	£903
3 Bed Gold Woodland Lodge	£833	£1,382	N/A	£2,256	£879	£1,290	£724	£1,086

visit [www.michaelpaulholidays.co.uk](http://www.michaelpaulholidays.co.uk) or call **01275 371133** to book

*Cornwall*





## The Cotswolds



The Cotswolds are the very picture of the English countryside, a landscape of gently rolling hills and picturesque valleys that visitors can't help but be charmed by. Located mainly within Gloucestershire and Oxfordshire, but also crossing into Somerset, Warwickshire, Wiltshire and Worcestershire, the Cotswolds have been officially designated as an Area of Outstanding Natural Beauty, and it's certainly not hard to see why. The unspoilt landscapes are a perfect place for a holiday where you can relax, explore, and drink in the scenery of this beautiful location. It's also perfect for a more active break, with plenty of hiking and cycling trails which offer the added bonus of spectacular sights and surroundings to enjoy.

The gorgeous settlements scattered through the Cotswolds are no less appealing than the countryside itself. The honey-coloured Cotswold stone quarried from the area is easy to recognise and typifies the traditional cottages built in the villages and towns found here. Stumbling upon these little places can be a delight and it's well worth just exploring and seeing what you can find. As well as smaller settlements, the Cotswolds also boasts a number of stately homes, historical castles, and grand churches which offer an insight into the heritage of the area. If you're looking for larger, more thriving towns, you can head to Cirencester, Stroud or Tewkesbury, or travel to the more urban surroundings of Gloucester or Cheltenham.

visit [www.michaelpaulholidays.co.uk](http://www.michaelpaulholidays.co.uk) or call **01275 371133** to book



## Cotswold Cottages

### CHIPPING NORTON

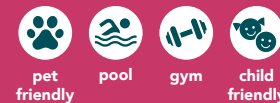
This beautiful collection of cottages is located in the Cotswolds in Oxfordshire, with 12 luxury properties set amid the stunning surroundings of a scenic countryside estate. Each has its own unique layout with a style and appeal all of its own.

There's something here to suit the needs of any type of holiday, whether you're looking for a peaceful romantic escape, a fun break with the kids, or a chance to host a huge get-together. There's also a range of on-site amenities to make a stay here really special.



★ **GREAT FOR...**  
On-site pool and gym  
Relaxing spa treatments  
Kids' playgrounds

📍 **NEARBY...**  
Cotswold Motoring Museum  
Warwick Castle  
Cotswold Wildlife Park & Gardens



Cotswold Cottages	BEST PRICE		SPRING prices from		SUMMER prices from		AUTUMN prices from		WINTER prices from	
	4 Nights	7 Nights	4 Nights	7 Nights	4 Nights	7 Nights	4 Nights	7 Nights	4 Nights	7 Nights
1 Bed Cottage	£910	£1,429	£1,148	£1,781	£969	£1,561	£802	£1,076		
2 Bed Cottage	£942	£1,583	£1,825	£2,319	£1,246	£1,766	£908	£1,160		
3 Bed Cottage	£1,138	£1,787	£1,899	£2,948	£1,892	£2,385	£832	£1,489		
4 Bed Cottage	£2,055	£2,895	£3,358	£4,267	£1,713	£2,891	£1,337	£2,099		
5 Bed Cottage	£2,187	£4,537	£5,684	£6,497	£3,355	£4,221	£2,618	£3,358		

## Cotswold Collection

If you're looking for a break set amid some of the most beautiful scenery England has to offer, we offer a wide variety of holiday homes in and around the unspoilt Cotswolds Area of Outstanding Natural Beauty. This protected landscape is a perfect place for walking, exploring and sightseeing, with endless hiking routes and stunning panoramic vistas around every corner and atop every hill.

We have 20 properties situated in a range of choice locations, including charming villages, bustling market towns, and secluded rural hideaways. There's something to suit any type of holiday you can imagine, whether you're aiming to arrange a romantic break, a family get-together, or anything else. Every property is full of unique charm, so you can rest assured you'll be heading off for a getaway you'll never forget.



### ★ GREAT FOR...

- Walking
- Cycling
- Stunning views

### 📍 NEARBY...

- Cotswolds Area of Outstanding Natural Beauty
- Gloucestershire Warwickshire Steam Railway
- The Roman Baths, Bath



pet friendly



countryside





Harrowby End, Ebrington



Catalpa Cottage, Tetbury



Coach House, Hawling



Catalpa Cottage, Tetbury



Cider Press, Ilmington



Harrowby End, Ebrington

Cotswold Collection	BEST PRICE		SPRING		SUMMER		AUTUMN		WINTER	
	4 Nights	7 Nights	prices from	prices from	prices from	prices from	prices from	prices from	prices from	
1 Bed Cottage	£621	£865	£693	£963	£621	£865	£527	£728		
2 Bed Cottage	£661	£921	£738	£1,063	£661	£921	£559	£775		
3 Bed Cottage	£1,022	£1,385	£1,022	£1,452	£913	£1,295	£766	£1,080		
4 Bed Cottage	£1,131	£1,587	£1,231	£1,749	£1,098	£1,560	£950	£1,300		
5 Bed Cottage	£1,865	£2,583	N/A	£3,124	£1,808	£2,583	£1,263	£1,797		



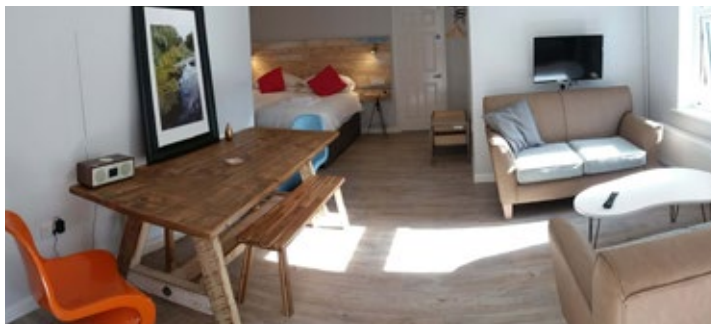
Coach House, Hawling


## Five Valleys Aparthotel

### STROUD

Book a break at Five Valleys Aparthotel for a stay in a stylish modern apartment with easy access to both town and countryside. Located in the market town of Stroud, surrounded by the Cotswolds Area of Outstanding Natural Beauty, there's something for everyone here.

These apartments come complete with all the modern conveniences you'd expect, including flatscreen TVs, a dishwasher and washing machine, and a fully equipped kitchen with all the appliances and utensils you'll need.



Five Valleys Aparthotel 	SPRING prices from		SUMMER prices from		AUTUMN prices from		WINTER prices from	
	4 Nights	7 Nights	4 Nights	7 Nights	4 Nights	7 Nights	4 Nights	7 Nights
Standard 1 Bed Apartment	£288	£522	£288	£522	£288	£522	£288	£522
Superior 1 Bed Apartment	£315	£563	£315	£563	£315	£563	£315	£563

★ **GREAT FOR...**  
Modern living  
Walking trails  
Exploring the Cotswolds

📍 **NEARBY...**  
Stroud town centre  
Slimbridge Wetland Centre  
Gloucester Cathedral



pet  
friendly



WiFi  
available



parking



Derbyshire



Peak District National Park

DERBYSHIRE DALES LODGES



ASHBOURNE HEIGHTS

Derbyshire and the Peak District National Park are a beautiful part of the UK and a popular destination for holidays and short breaks and we have a number of holiday lodges available to book. The area boasts many charms which include a large number of historic attractions, fun amusements and picturesque towns and villages. The rolling hills of the Derbyshire countryside

and the magnificent Peak District have given the county its well-deserved reputation as the perfect holiday destination.

One of the best ways to explore the area is by taking a nostalgic trip on Peak Rail, a heritage railway where you can ride a steam train operating between Darley Dale, Matlock and Rowsley South. For a bird's eye view, head to the Heights of Abraham where

you can admire spectacular views of the Derwent Valley and the Peak District from a cable car. If you prefer, you can explore underground in one of the spectacular show caverns. With miles of wonderful countryside to explore by foot, rail and air it is no wonder visitors return frequently to this beautiful part of the UK.

## Ashbourne Heights

### ASHBOURNE

Ashbourne Heights Holiday Park is set in the gorgeous surroundings of the southern region of the Peak District, with its elevated position granting beautiful views across the rolling countryside that surrounds it. This is a great place to enjoy a relaxing rural holiday, whether you'd rather hike or cycle the rugged local landscapes or just sit back, relax, and take in the idyllic scenery.

Accommodation at Ashbourne Heights includes a range of luxurious lodges, comfortable caravans, and quirky glamping pods and tents. The resort has some fantastic on-site amenities for guests, including a heated indoor swimming pool, an outdoor kids' play area, a handy shop for those daily necessities, and a laundrette. You're less than a mile from the charming village of Fenny Bentley, and just 3 miles from the market town of Ashbourne.



#### GREAT FOR...

Exploring the Peak District  
Countryside views  
Pretty villages



#### NEARBY...

Tissington Trail cycle path  
Dovedale Valley  
Carsington Water



pool



countryside



glamping

Ashbourne Heights	BEST PRICE		SPRING prices from		SUMMER prices from		AUTUMN prices from		WINTER prices from	
	4 Nights	7 Nights	4 Nights	7 Nights	4 Nights	7 Nights	4 Nights	7 Nights	4 Nights	7 Nights
2 Bed Lodge (Sleeps 6)	£572	£746	£773	£1,030	£419	£560	£416	£554		
Luxury Caravan 2 Bed (Sleeps 6)	£442	£576	£597	£796	£324	£432	£321	£428		
Luxury Caravan 3 Bed (Sleeps 8)	£551	£719	£745	£994	£405	£539	£401	£574		
1 Bed Pod with Hot Tub (Sleeps 4)	£424	£565	£573	£764	£310	£415	n/a	n/a		

## Derbyshire Dales Lodges

### BRASSINGTON

You'll find rustic hospitality galore in these cosy log cabins, set on a working farm with wonderful rural surroundings and easy access to the incredible landscapes of the Peak District. It's an ideal opportunity to get away from it all without missing out on those home comforts.

Perfect for walking, cycling or riding holidays, there's no better place to escape the hustle and bustle of modern life. The lodges also make a superb secluded getaway from which to visit attractions in the local area.



- ★ **GREAT FOR...**
  - Countryside scenery
  - Rustic charm
  - Sauna, spa and fire pit

- 📍 **NEARBY...**
  - Carsington Sports & Leisure
  - Alton Towers
  - Crich Tramway Village




pet friendly

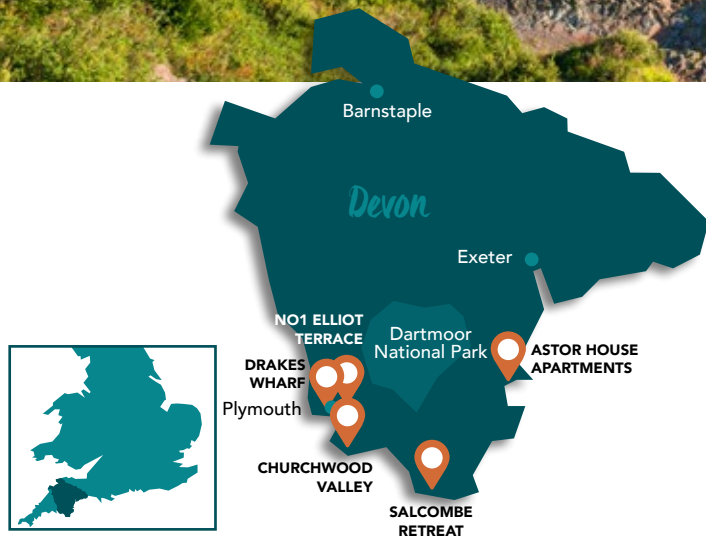


accessible



hot tubs

Derbyshire Dales Lodges 	SPRING prices from		SUMMER prices from		AUTUMN prices from		WINTER prices from	
	4 Nights	7 Nights	4 Nights	7 Nights	4 Nights	7 Nights	4 Nights	7 Nights
2 Bed Cabin	£568	£645	£856	£900	£654	£762	£559	£645
3 Bed Cabin	£776	£810	£1,012	£1,195	£776	£910	£675	£810



It's no surprise Devon is one of the most popular holiday destinations in the UK, with unspoilt countryside, two beautiful coasts, and countless things to do. Whatever you look for on a holiday, you'll likely find it here. Those searching for scenic surroundings will delight in Devon's gorgeous beaches, secluded rural regions, and windswept moors. If you're hoping to explore the region's heritage, there are plenty of stately homes, ancient castles and even prehistoric monuments to which you can pay a visit. Rich in wildlife and natural beauty, it's the perfect place to get away from it all. And don't forget to sample a traditional Devon cream tea.

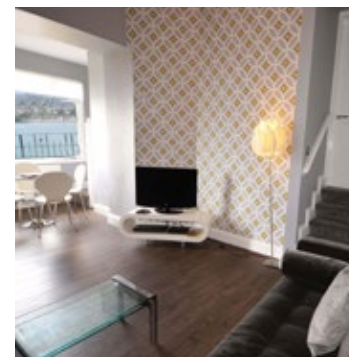
That's not to say that relaxation is all Devon has to offer. Thrill-seekers in search of a more active holiday will find all kinds of things to do here, including a range of watersports, extreme sports opportunities, and walking and cycling routes. If you're looking for more urban pursuits, the thriving city of Exeter is an excellent place to visit for shopping and dining, as well as having some fascinating historic buildings like its medieval cathedral. The pretty port city of Plymouth is well worth a visit too, whether you're walking the cobbled streets of the harbourside Barbican or going shopping in Drake Circus.

## Astor House Apartments

### TORQUAY

Set in a superb clifftop location overlooking Torquay's seafront, Astor House is a fantastic place to stay on this outstanding 22-mile stretch of South Devon coastline known as the 'English Riviera'. With easy access to the beach, marina, and town centre, Astor House is ideal for taking full advantage of everything Torquay and the surrounding Torbay area has to offer.

Most of the modern apartments at Astor House boast uninterrupted sea views thanks to the building's elevated location, with some even offering luxurious private balconies. This Victorian villa with its added contemporary wings really does provide all the comfort, charm and convenience you need for an unforgettable break.



**★ GREAT FOR...**  
 Superb sea views  
 Beach breaks  
 Exploring Torbay


**📍 NEARBY...**  
 Torre Abbey Sands beach  
 Torquay Marina  
 Torquay town centre



coastal



luxury

Astor House Apartments 	SPRING prices from		SUMMER prices from		AUTUMN prices from		WINTER prices from	
	4 Nights	7 Nights	4 Nights	7 Nights	4 Nights	7 Nights	4 Nights	7 Nights
1 Bed Apartment	£420	£673	£520	£793	£287	£425	£208	£301
2 Bed Apartment	£750	£1,100	£950	£1,400	£620	£927	£364	£505

# Churchwood Valley

## PLYMOUTH

This secluded resort is located in the South Devon Area of Outstanding Natural Beauty, in a wooded valley which runs all the way down to the lovely Wembury Beach. It's ideal for nature lovers or anyone who wants a break from modern life, whether you'd prefer an active outdoor holiday or just need somewhere to relax. You can explore the countryside and coastline along a range of great walking routes or just unwind in the resort's tranquil forest setting, with gorgeous views and plenty of wildlife.

There's a range of lodges to pick from, all designed to fit in with their natural surroundings without sacrificing cosiness, convenience, or all the modern appliances you'd expect.



★ **GREAT FOR...**  
Nature watching  
Walking trails  
Superb views

📍 **NEARBY...**  
South West Coast Path  
Wembury Beach  
Plymouth



pet friendly



countryside



beach nearby

Churchwood Valley	BEST PRICE guarantee		SPRING prices from		SUMMER prices from		AUTUMN prices from		WINTER prices from	
	4 Nights	7 Nights	4 Nights	7 Nights	4 Nights	7 Nights	4 Nights	7 Nights	4 Nights	7 Nights
1 Bedroom Hawthorne Lodge	£268	£335	£380	£475	£292	£365	£268	£335		
2 Bedroom Chestnut Lodge	£356	£445	£604	£755	£388	£485	£340	£425		
2 Bedroom Garden Lodge	N/A	£575	N/A	£1,030	N/A	£670	N/A	£535		
3 Bedroom Oak Lodge	N/A	£600	N/A	£1,050	N/A	£700	N/A	£560		



## Drakes Wharf Apartments

### PLYMOUTH

These apartments in Plymouth are located in a Grade I listed building in the historic naval site of Royal William Yard, next to the mouth of the River Tamar. The beautifully designed contemporary accommodation at Drakes Wharf makes for a comfortable and unique place to stay during a break in this fantastic coastal city.

A break at one of these smart modern apartments puts you in a perfect position to explore Plymouth's famous waterfront, including the trendy shops, cafés and restaurants of Royal William Yard, the scenic Plymouth Hoe promenade, and the historic Barbican and Sutton Harbour, as well as the rest of the city's attractions.



### Drakes Wharf Apartments



	SPRING prices from		SUMMER prices from		AUTUMN prices from		WINTER prices from	
	4 Nights	7 Nights	4 Nights	7 Nights	4 Nights	7 Nights	4 Nights	7 Nights
1 Bed Apartment	£452	£681	£585	£868	£421	£661	£337	£493
2 Bed Apartment	£645	£860	£795	£1,190	£589	£758	£438	£635

★ **GREAT FOR...**  
City living  
Coastal scenery  
History and heritage

📍 **NEARBY...**  
National Marine Aquarium  
Plymouth Gin Distillery  
Drake Circus Shopping Centre



coastal



historic

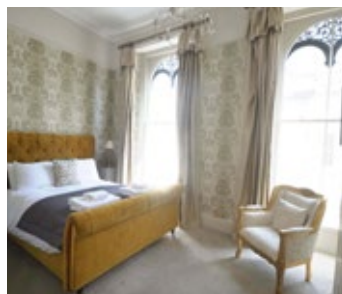
## No 1 Elliot Terrace Apartments

### PLYMOUTH

This Grade II\* listed Italianate building benefits from an unforgettable location on Plymouth Hoe, with spectacular views across Plymouth Sound to the English Channel beyond. The stylish apartments on offer here boast superb decor and all the modern amenities and conveniences you need to enjoy a city break.

Whether you'd rather enjoy Plymouth's scenic coastline, the thriving, trendy culture, or the unspoilt Devon landscapes that surround the city, No 1 Elliot Terrace is a fantastic place to return to and relax at the end of the day, with a central location giving you easy access to everything the local area has to offer.



*"The room was absolutely beautiful, the decoration was perfect and the view was to die for... Truly stunning."*



No 1 Elliot Terrace Apartments	BEST PRICE Guarantee		SPRING prices from		SUMMER prices from		AUTUMN prices from		WINTER prices from	
	4 Nights	7 Nights	4 Nights	7 Nights	4 Nights	7 Nights	4 Nights	7 Nights	4 Nights	7 Nights
1 Bed Apartment	£400	£680	£497	£759	£280	£415	£246	£363		
2 Bed Apartment	£600	£950	£869	£1,237	£520	£775	£438	£659		
2 Bed Penthouse Apartment	£600	£950	£869	£1,237	£520	£775	£438	£659		
4 Bed Apartment	£1,003	£1,482	£1,182	£1,650	£843	£1,305	£566	£849		

★ **GREAT FOR...**  
 Ocean views  
 Coastal walks  
 Exploring the city

📍 **NEARBY...**  
 Plymouth Hoe promenade  
 Theatre Royal  
 The Barbican & Sutton Harbour

 coastal  historic

## Salcombe Retreat

### SALCOMBE

These superb luxury lodges are located in the South Devon Area of Outstanding Natural Beauty, with spectacular countryside views stretching across to the nearby coastline. Whether you're looking for a peaceful coastal escape or an active holiday of hiking, boating, or cycling, Salcombe Retreat provides comfortable and convenient accommodation you'll love.

Salcombe Retreat's luxurious lodges have been designed and laid out specifically to make the most of their surroundings, with decking to sit out on and large windows that let in plenty of light and offer prime countryside views without losing that secluded private feeling that's so important when you're looking to relax on holiday.



#### ★ GREAT FOR...

Stunning views  
Countryside walks  
Coastal excursions

#### 📍 NEARBY...

Soar Mill Cove Beach  
Seaside town of Salcombe  
South West Coast Path



beach nearby



luxury



pet friendly

Salcombe Retreat



SPRING  
prices from

SUMMER  
prices from

AUTUMN  
prices from

WINTER  
prices from

2 Bed Lodge

4 Nights

7 Nights

4 Nights

7 Nights

4 Nights

7 Nights

4 Nights

7 Nights

£700

£825

N/A

£1,225

£475

£725

£475

£700

3 Bed Lodge

£700

£825

N/A

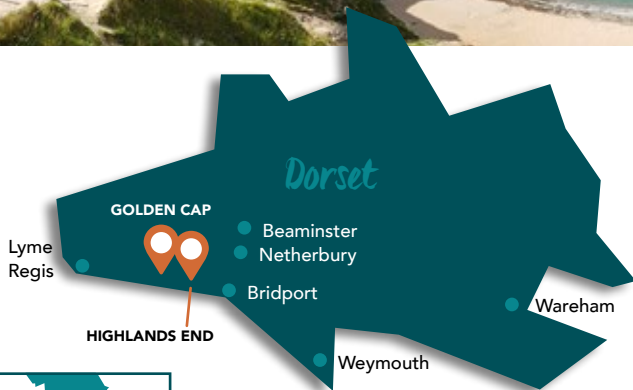
£1,225

£475

£725

£475

£700



Dorset is perhaps best known for the striking Jurassic Coast, a World Heritage Site consisting of a 96-mile stretch of coastline made up of rock formations spanning 185 million years of geological history and dating back to the Mesozoic Era, when dinosaurs roamed the Earth. You'll find spectacular landmarks, including the limestone arch of Durdle Door and the horseshoe-shaped Lulworth Cove, countless beautiful beaches perfect for family days out and fossil-hunting excursions and towering, rugged cliffs, ideal for a bracing walk as you take in the amazing views.

Of course, there's more to Dorset's heritage than just the prehistoric past, Ancient ruins such as Corfe Castle

and Christchurch Castle, as well as countless stately homes and mansions like Lulworth Castle & Park, Highcliffe Castle, and Sherborne Castle, which give a glimpse at the human history of the area.

If you prefer the countryside to the coast, Dorset has you covered there too, with over half the county having been officially declared to belong to one of two Areas of Outstanding Natural Beauty in the vicinity. Whether you're looking to relax in unspoilt surroundings, or take anything from a casual stroll to a lengthy hike through a gorgeous landscape, Dorset is a great holiday destination for you.

## Golden Cap

### BRIDPORT

A truly scenic getaway, Golden Cap Holiday Park is a welcoming resort on the Jurassic Coast, just 150 yards from Seatown Beach and surrounded by 2,000 acres of beautiful National Trust land. Whether you want to relax in natural surroundings or get active hiking across the cliffs and beaches, this is an ideal destination.

The on-site shop has a range of food on offer, and there's also a pizza takeaway service available at reception. Alternatively, the award-winning beachside Anchor Inn is just 2 minutes' walk away.



★ **GREAT FOR...**  
Seaside fun  
Walking routes  
Exploring the Jurassic Coast

📍 **NEARBY...**  
Lulworth Cove  
Durdle Door  
Lyme Regis Museum



pet friendly



beach nearby

Golden Cap	BEST PRICE		SPRING prices from		SUMMER prices from		AUTUMN prices from		WINTER prices from	
	4 Nights	7 Nights	4 Nights	7 Nights	4 Nights	7 Nights	4 Nights	7 Nights	4 Nights	7 Nights
2 Bed Caravan	£351	£498	£620	£823	£331	£473	£239	£341		
3 Bed Caravan	£296	£508	£630	£900	£415	£569	£295	£432		
3 Bed Lodge	£574	£818	£1,133	£1,620	£635	£909	£488	£696		

## Dorset Collection

We have 17 gorgeous holiday properties on offer in Dorset, from traditional chocolate-box cottages to contemporary barn conversions and beachside escapes - those seen here are just a sample! We can accommodate anything from small families to large groups planning to get together, with property sizes to fit all needs.

Dorset is a county with a lot to see and do, with extensive areas of natural beauty as well as the stunning, rugged scenery of the Jurassic Coast to explore. Whether you'd rather surround yourself with countryside or coastal scenery, we have something to suit.



Odd Nod Cottage, Wareham





Wellhayes Barn, Lyme Regis



Old Piggeries, Bridport



Larch Barn, Beaminster



Pear Tree Cottage, Netherbury



Wellhayes Barn, Lyme Regis

Dorset Collection	BEST PRICE		SPRING prices from		SUMMER prices from		AUTUMN prices from		WINTER prices from	
	4 Nights	7 Nights	4 Nights	7 Nights	4 Nights	7 Nights	4 Nights	7 Nights	4 Nights	7 Nights
2 Bed Cottage	£790	£1,224	£790	£1,128	£790	£1,128	£672	£960		
3 Bed Cottage	£1,092	£1,554	£1,395	£2,106	£1,092	£1,600	£944	£1,294		
4 Bed Cottage	£1,506	£2,150	N/A	£3,118	£1,506	£2,150	£1,077	£1,471		

★ **GREAT FOR...**  
 Hiking  
 Coastal trips  
 Rural relaxation

📍 **NEARBY...**  
 Dorset Area of Outstanding Natural Beauty  
 Jurassic Coast  
 Cranborne Chase Area of Outstanding Natural Beauty



pet friendly



hot tubs



beach nearby




## Highlands End

### BRIDPORT

Highlands End is a five-star luxury holiday park in Dorset, offering a quality selection of lodges, caravans and apartments as well as a great selection of resort facilities.

There's a swimming pool, tennis courts and a pitch 'n' putt course, ideal for guests who enjoy an active break, as well as a grocery shop offering fresh produce. When you don't feel like cooking, the onsite bar/restaurant and coffee shop are perfect for drinks, snacks and meals. And Eype beach is just 500m from the park.



Highlands End 	SPRING prices from		SUMMER prices from		AUTUMN prices from		WINTER prices from	
	4 Nights	7 Nights	4 Nights	7 Nights	4 Nights	7 Nights	4 Nights	7 Nights
2 Bed Caravan	£285	£410	£574	£843	£325	£465	£235	£335
3 Bed Caravan	£350	£500	£579	£899	£390	£560	£300	£432
2 Bed Lodge	£555	£790	N/A	£1,280	£615	£875	£490	£700
3 Bed Lodge	£590	£840	N/A	£1,740	£650	£960	£530	£755

**★ GREAT FOR...**  
Swimming and sports  
Great views  
Local beaches

**📍 NEARBY...**  
South West Coast Path  
Lyme Regis Marine Aquarium  
Monkey World



pet friendly



pool



beach nearby



visit [www.michaelpaulholidays.co.uk](http://www.michaelpaulholidays.co.uk) or call **01275 371133** to book

*Dorset*





If you're looking for relaxing holiday cottages, Herefordshire is a lovely destination. The villages and market towns in this county are quaint and free from the stresses of big city life. Take the time to slow down, get away from it all and experience all the natural beauty and fascinating history this area has to offer.

Whether you unwind by perusing Tudor houses, making use of one of the walking and cycling trails or marvelling at the gorgeous limestone gorges and woodlands, staying in one of our charming, idyllic and picturesque cottages in Herefordshire will give you the ideal base to experience it all.

If you want to breathe in fresh country air, gaze at the Malvern Hills and the Wye Valley, dip your toes in the River Wye, wander around a traditional town or simply have a moment to yourself in one of our rejuvenating holiday cottages, Herefordshire is the ideal place to be.

We're in love with our cottages – and we know you will be too. We know our properties inside and out, and are dedicated to helping you find the perfect one to stay in during your peaceful, pastoral getaway. Come, recharge your batteries and return to the simpler things in life.

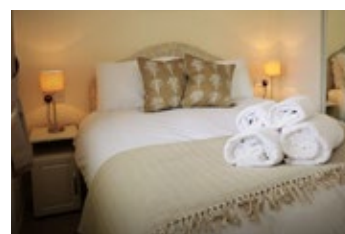
## Arrow Bank

### LEOMINSTER

For a relaxing self-catering holiday amid unspoilt English countryside, you can't beat a stay in Arrow Bank's comfortable lodges. You can fish in the River Arrow, hike the local trails, stroll around the local villages or just unwind in beautiful surroundings.

Close to Arrow Bank you'll find the picturesque village of Eardisland, with a local pub, cafe and shop set against the striking backdrop of its pretty black-and-white Tudor houses. The whole area is dotted with scenic English villages, including Kingsland, Pembridge, Dilwyn, and many more.

*"This was our first visit to this site but will definitely not be our last, already planning a return!"*



- ★ **GREAT FOR...**
- Fishing
- Hiking
- Countryside views

- 📍 **NEARBY...**
- Queenswood Country Park
- Leominster Museum
- Small Breeds Farm Park and Owl Centre



pet friendly



countryside



fishing

Arrow Bank Country Holiday Park	SPRING prices from		SUMMER prices from		AUTUMN prices from		WINTER prices from	
	4 Nights	7 Nights	4 Nights	7 Nights	4 Nights	7 Nights	4 Nights	7 Nights
2 Bed Standard Lodge	£391	£559	£434	£620	£339	£483	£256	£366
2 Bed Premium Lodge	£445	£652	£463	£661	£349	£498	£278	£397



## Herefordshire Collection

If you're looking to stay in a traditional country cottage in Herefordshire, we have four fantastic properties available to book.

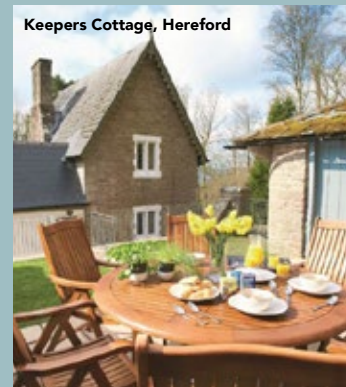
Hampton Wafre Cottage is a converted 17th century barn, sleeping 4, which is situated on a working farm in Docklow, close to Leominster. The luxurious 2 The Oaks Cottage, near the village of Hoarwithy, can accommodate up to 4 guests. The Cider Mill in Catley is perfect for a romantic break, with room for 2 in this Grade II listed building. And Keepers Cottage, with space for up to 6 guests, is located on a private woodland estate and boasts its own cinema room, sauna and ping-pong table.



**Hampton Wafre Cottage, Leominster**



**Keepers Cottage, Hereford**



★ **GREAT FOR...**  
Rural charm  
Couples' holidays  
History and heritage

📍 **NEARBY...**  
Wye Valley Area of Outstanding  
Natural Beauty  
Hereford Cathedral  
Hereford Cider Museum



pet  
friendly



hot tubs



beach  
nearby



The Oaks, Hereford



Hampton Wafre Cottage, Leominster




Hampton Wafre Cottage, Leominster



The Cider Mill, Ledbury



Hampton Wafre Cottage, Leominster

Herefordshire Collection 	SPRING prices from		SUMMER prices from		AUTUMN prices from		WINTER prices from	
	4 Nights	7 Nights	4 Nights	7 Nights	4 Nights	7 Nights	4 Nights	7 Nights
1 Bed Cottage	£597	£841	£669	£941	£597	£841	£502	£705
2 Bed Cottage	£560	£804	£793	£1,182	£560	£788	£472	£659
3 Bed Cottage	£712	£985	£1,005	£1,474	£838	£1,213	£723	£985



For a really unique getaway, why not take a trip to the Isle of Wight? Situated just off the south coast of England, this island has been a popular holiday destination since Victorian times.

The mild climate and prime location make it the perfect place to spend time by the sea, with plenty of spectacular beaches and striking coastal scenery. You won't want to miss a visit to the Needles, the three distinctive rock stacks jutting out into the sea which are a truly stunning landmark. For more traditional seaside excursions, head to Shanklin or Ventnor, thriving coastal resorts with beautiful golden beaches, with other superb destinations including Sandown, Ryde and Cowes.

There's plenty to do besides visit the beach. Don't forget to take a trip to the island's thriving main town, Newport, which is rich with heritage yet bustles with life. Explore the island's many historical attractions, which include castles, churches, and even Blackgang Chine, the UK's oldest amusement park.

There are plenty of walking and cycling trails for those who want to get active while experiencing the island's beautiful landscapes. And the Isle of Wight is also considered the Dinosaur Capital of the UK, being a rich area for prehistoric discoveries - why not visit the Dinosaur Isle museum, or go on a fossil hunting trip of your own and see what you can find?




## The Lakes Rookley

### VENTNOR

For a blissful break on the Isle of Wight, you can't beat a stay at the Lakes Rookley, a leafy parkland resort with two large, gorgeous lakes. Well situated in a central location on the island, it offers easy access to anywhere you might like to go.

Not only is the Lakes Rookley superbly located, but there's plenty to do on-site, too, with watersports on the lakes, an indoor and outdoor swimming pool, a packed entertainment schedule, and a bar and restaurant for drinks, snacks and meals.



The Lakes Rookley 	SPRING prices from		SUMMER prices from		AUTUMN prices from		WINTER prices from	
	4 Nights	7 Nights	4 Nights	7 Nights	4 Nights	7 Nights	4 Nights	7 Nights
2 Bed Lakehouse	£343	£781	£1,012	£1,450	£266	£420	£195	£299
2 Bed Premium Cottage with Hot Tub	£340	£678	£1,060	£1,544	£309	£485	£248	£377
3 Bed Premium Cottage with Hot Tub	£365	£675	£1,063	£1,737	£454	£672	£278	£331
2 Bed Premium Caravan with Hot Tub	£356	£655	£828	S/O	£232	£364	£184	£280
3 Bed Premium Caravan with Hot Tub	£452	£697	£949	S/O	£260	£533	£196	£301
2 Bed Superior Caravan	£193	£302	£675	£980	£162	£259	£107	£161
3 Bed Superior Caravan	£212	£335	£724	£1,043	£179	£280	£118	£182

**★ GREAT FOR...**  
On-site amenities  
Sports and activities  
Entertainment schedule

**📍 NEARBY...**  
Blackgang Chine theme park  
Carisbrooke Castle  
Dinosaur Isle museum



hot tubs



pool



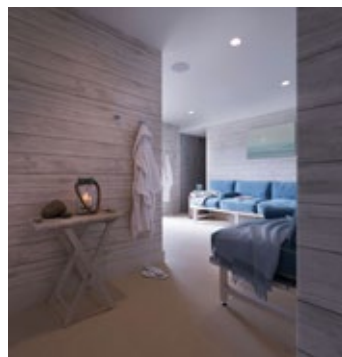
bar /  
restaurant

## West Bay

### YARMOUTH

Offering a comfortable range of New-England-style properties on the Isle of Wight, the West Bay Cottages are a great place for a break. Escaping from the rigours of everyday life couldn't be more convenient than with the on-site Wellness Club & Spa, where you can enjoy an exciting variety of sports and recreation or be pampered with a range of health and beauty treatments.

There's plenty to do for the kids, too, with events and activities whatever the weather, and the cottages are also ideally located for exploring the island's coastline.



West Bay



	SPRING prices from		SUMMER prices from		AUTUMN prices from		WINTER prices from	
	4 Nights	7 Nights	4 Nights	7 Nights	4 Nights	7 Nights	4 Nights	7 Nights
3 Bed House	£640	£890	N/A	£1,860	£786	£1,030	£657	£766
4 Bed House	£944	£1,255	N/A	£2,663	£1,159	£1,534	£921	£1,210

★ **GREAT FOR...**  
Family holidays  
Coastal relaxation  
Spoiling yourself

📍 **NEARBY...**  
Yarmouth town  
Tennyson Trail coastal walk  
Fantastic beaches



tennis



large groups



pool



child friendly



visit [www.michaelpaulholidays.co.uk](http://www.michaelpaulholidays.co.uk) or call **01275 371133** to book

*The Isle of Wight*





## Lincolnshire

● Lincoln

SYCAMORE FARM



● Skegness

● Grantham

● Spalding



Famous for its seaside resorts, its diverse, unspoilt landscapes, and its rich heritage, Lincolnshire is the perfect location for a relaxing, unhurried holiday. There are plenty of coastal spots worth spending some time at, whether you'd prefer the traditional British holiday feel of places like Skegness, Ingoldmells and Cleethorpes, or would rather head for quieter destinations like Mablethorpe or Sutton-on-Sea.

The Lincolnshire countryside is just as glorious, with a variety of scenic geographic areas including the salt marshes along the coast, the flat farmland of the Fens, and, most popularly, the hills and valleys of the Lincolnshire Wolds, designated an Area

of Outstanding Natural Beauty. Don't miss the Lincoln Edge, a limestone cliff which runs for 50 miles through central Lincolnshire.

The history of Lincolnshire is fascinating and there are plenty of attractions to explore if you'd like to get a glimpse into the heritage of the area. The city of Lincoln is steeped in the past, with all sorts of buildings, monuments and museums to visit. Beyond that, though, the county's history can be found all over the place, with many of Lincolnshire's small villages still retaining their traditional character and charm, offering a superb glimpse into days gone by.

## Sycamore Farm Park

### SKEGNESS

Sycamore Farm Park is a peaceful resort boasting 14 acres of scenic grounds within the Lincolnshire countryside. The comfortable, modern holiday homes are fully equipped with everything you need for a self-catering holiday in secluded, picturesque surroundings, and contain central heating as well as spacious living areas.

This resort is a fantastic place for a fishing holiday. There are two lakes on the site which are packed full of fish, ideal for unwinding on the bank while reeling in a carp or barbel. If you'd rather hit the beach, the seaside town of Skegness is just a few miles away from Sycamore Farm Park - the perfect opportunity for a coastal outing. The on-site shop and launderette are very convenient, and the local village has a wide range of shops perfect for stocking up.



★ **GREAT FOR...**  
Fishing  
Country walks  
Trips to the seaside

📍 **NEARBY...**  
Skegness  
Lincolnshire Aviation Centre  
Natureland Seal Sanctuary



countryside



fishing



parking

Sycamore Farm Park



**SPRING**  
prices from

**SUMMER**  
prices from

**AUTUMN**  
prices from

**WINTER**  
prices from

4 Nights

7 Nights

4 Nights

7 Nights

4 Nights

7 Nights

4 Nights

7 Nights

3 Bed Platinum Caravan

£300

£500

£390

£680

£375

£500

£300

£400



Whether you prefer the hustle and bustle of vibrant city living or the tranquility of scenic countryside surroundings, a break in London and the Home Counties is sure to have something for you. There's no end of variety on offer when you take a break here, with events and attractions to suit every taste.

The Home Counties - Berkshire, Buckinghamshire, Essex, Hertfordshire, Kent, Surrey and Sussex - are the counties that surround London, having historically helped to shape, and having been shaped by their proximity to, the capital city of the United Kingdom. Each of them has its own unique identity with something special to offer, so you can be sure of a great holiday no matter

which you choose to visit.

A visit to London and the Home Counties offers countless opportunities and experiences, with examples of everything that makes England so appealing. If you're looking for engaging culture and delicious cuisine, you'll have no trouble finding it. There's beautiful countryside, modern city living, and amazing coastal surroundings, whichever you'd prefer. If you'd like to delve into the past, take a trip to the many museums, castles, manor houses, and even sites dating back to the Stone Age. And that's just to get you started - there's no end to the adventures and activities to be uncovered in this amazing area.

visit [www.michaelpaulholidays.co.uk](http://www.michaelpaulholidays.co.uk) or call **01275 371133** to book

*London &  
The Home Counties*



## Kent Collection

Kent is known as the “Garden of England” for its orchards, farms and glorious countryside views, making it perfect for anyone who enjoys spending their time outdoors. The county also boasts some spectacular stretches of coastline, which includes some of the best beaches in Europe. And it’s also the perfect place to dive into the past and visit incredible historic castles, churches, stately homes, and other striking examples of the area’s heritage.

If you’re looking to take a break in Kent, we offer 13 different properties, from stylish modern apartments to cosy classic cottages, in prime locations such as Canterbury and Broadstairs, as well as in a variety of other superb countryside villages and coastal hamlets. The images seen here are just an example of what we have on offer.



### GREAT FOR...

Beach breaks  
Walking and cycling  
Exploring history



### NEARBY...

Canterbury Cathedral  
Dover Castle  
Dungeness National Nature Reserve



pet  
friendly



beach  
nearby



hot tubs

Rose Barn, West Hougham



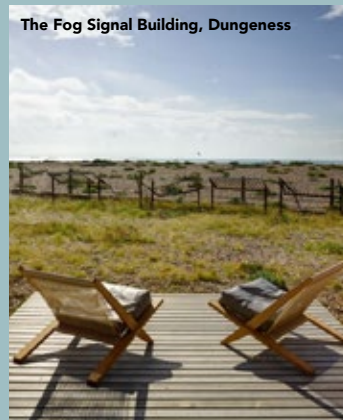
Rose Hill Cottages, West Hougham



Horizon View, Broadstairs



The Fog Signal Building, Dungeness



Hill View Barn, Elmsted

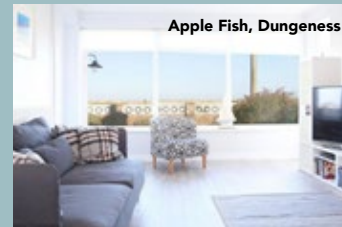




Rose Hill Cottages,  
West Hougham



The Penthouse, Folkestone



Apple Fish, Dungeness



Hill House Farm, Elham



The Fog Signal Building, Dungeness



The Penthouse, Folkestone

Kent Collection	BEST PRICE		SPRING prices from		SUMMER prices from		AUTUMN prices from		WINTER prices from	
	4 Nights	7 Nights	4 Nights	7 Nights	4 Nights	7 Nights	4 Nights	7 Nights		
1 Bed Apartment	£326	£579	£479.00	£591	£439	£499	£751	£877		
2 Bed Cottage	£475	£632	£731.00	£805	£531	£607	£470	£585		
3 Bed Cottage	£518	£768	£994.00	£1,313	£727	£995	£684	£900		



Rose Hill Cottages, West Hougham

## Sussex Collection

Made up of the counties of East Sussex and West Sussex, this area is perhaps best known for the gorgeous South Downs National Park, as well as countless popular coastal destinations, including the UK's sunniest stretch of seafont, the spectacular resort town of Eastbourne. Sussex's unique heritage and culture is well worth experiencing for yourself.

If you're looking to stay in Sussex, we have 8 comfortable and charming holiday properties dotted around the area in some superb locations. Take a seaside break in Camber Sands, Normans Bay, Winchelsea, or Middleton-on-Sea, or go for a scenic countryside stay alongside the High Weald Area of Outstanding Natural Beauty or the South Downs National Park. You can even stay in the only holiday property situated on the RSPB Pulborough Nature Reserve, perfect for birdwatchers or nature-lovers of any stripe.



The Bowery, Storrington



Sunshine Cottage, Normans Bay



Sunshine Cottage, Normans Bay



Nut Tree Cottage, Crowborough



The Barn at Banks Cottage, Pulborough





The Barn at Banks Cottage, Pulborough



Badger Cottage, Camber Sands



The Barn at Banks Cottage, Pulborough



Sea Way, Bognor Regis



Sea Way, Bognor Regis



Sussex Collection	BEST PRICE GUARANTEE		SPRING prices from		SUMMER prices from		AUTUMN prices from		WINTER prices from	
	4 Nights	7 Nights	4 Nights	7 Nights	4 Nights	7 Nights	4 Nights	7 Nights	4 Nights	7 Nights
2 Bed Cottage	£347	£810	£511	£630	£451	£521	£347	£425		
3 Bed Cottage	£503	£658	£645	£848	£595	£768	£503	£658		
4 Bed Cottage	£1,058	£1,495	£1,425	£1,772	£1,262	£1,568	£1,017	£1,634		
5 Bed Cottage	£1,160	£1,568	£1,848	£2,300	£1,240	£1,576	£1,160	£1,440		

**★ GREAT FOR...**  
Seaside holidays  
Natural beauty  
History and culture

**📍 NEARBY...**  
South Downs  
1066 Battle Abbey and  
Battlefield  
Bluebell Railway



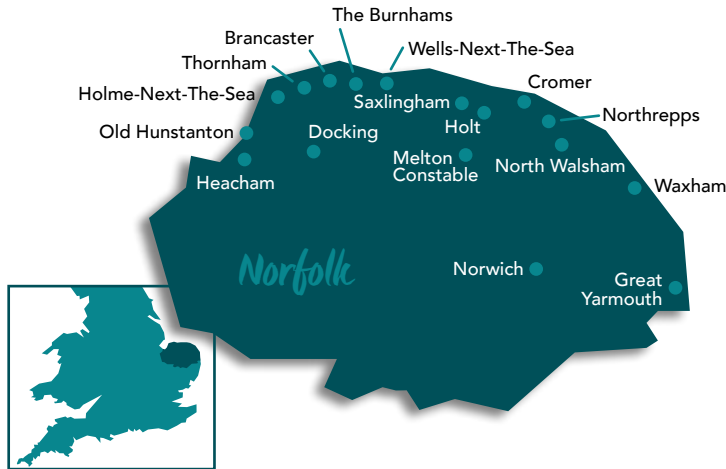
pet friendly



beach nearby



countryside



The county of Norfolk is ideal for anyone looking for a break in beautiful, rural surroundings, with endless miles of rolling countryside, traditional little villages and bustling market towns, rich in history and welcoming charm. Visit the Norfolk Broads National Park, with its 125 miles of navigable waterways, explore the region's extensive heathland and beautiful forests, and spot wildlife in thriving nature reserves which include Sculthorpe Moor, RSPB Snettisham, and Pensthorpe Natural Park. And, of course, there's the city of Norwich, which blends a rich heritage with contemporary culture and shopping opportunities and some fantastic places to eat and drink.

The Norfolk coast is a fantastic place for a holiday by the water, running alongside both the North Sea and one of the widest estuaries in the UK, the Wash. You'll find classic seaside resorts alongside sandy beaches at places like Great Yarmouth, Hunstanton, Sheringham, and Cromer, as well as further spectacular coastline beyond unspoilt marshes in locations like Titchwell (home to an RSPB reserve), Blakeney (where you'll find a National Nature Reserve known for its seal colonies), and Burnham Overy Staithe. The marshes serve as important natural habitats for a range of wildlife, making them the ideal place for birdwatchers and nature lovers to visit.

visit [www.michaelpaulholidays.co.uk](http://www.michaelpaulholidays.co.uk) or call **01275 371133** to book

Norfolk



## Norfolk Collection

If you're planning a trip to Norfolk, we have over 300 holiday properties on offer - those seen here are just examples! From spacious houses to cosy romantic cottages, or even unusual accommodation such as a shepherd's hut or converted signal box, there's something for everyone with our collection.

The county of Norfolk boasts countless reasons to visit, with a beautiful coastline, endless unspoilt countryside, and a rich heritage that's well worth exploring in depth, and our properties ensure you get to spend your break somewhere that suits you.



The Stable Yard, Northrepps



Wyndham Beach House, North Walsham



The Signal Box, Melton Constable



Wayfarers' Wood, North Walsham



Shangri-La, Waxham



Shangri-La, Waxham



Shangri-La, Waxham



### GREAT FOR...

- Country walks
- Seaside outings
- Wildlife watching



### NEARBY...

- Norfolk Coast Area of Outstanding Natural Beauty
- The Wash National Nature Reserve
- Great Yarmouth



pet friendly



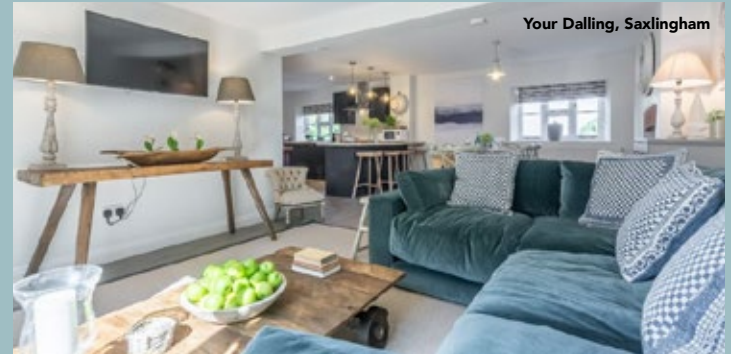
countryside



beach nearby



Plumtrees, Thornham



Your Dalling, Saxlingham



Tun House, Holt



Plumtrees, Thornham



Your Dalling, Saxlingham

Norfolk Collection	BEST PRICE GUARANTEE		SPRING prices from		SUMMER prices from		AUTUMN prices from		WINTER prices from	
	4 Nights	7 Nights	4 Nights	7 Nights	4 Nights	7 Nights	4 Nights	7 Nights	4 Nights	7 Nights
1 Bed Cottage	£382	£467	£522	£712	£382	£467	£307	£373		
2 Bed Cottage	£458	£562	£593	£731	£458	£562	£372	£455		
3 Bed Cottage	£616	£760	£808	£999	£616	£760	£570	£702		
4 Bed Cottage	£654	£807	£908	£1,244	£654	£807	£520	£639		



Woodland Pytchley, Cromer



Scotland is a truly special place to visit, with stunning scenery and a rich history making it a popular holiday destination. The sight of its pristine lochs, soaring mountains and rugged landscapes guarantee a getaway you'll remember forever. It's also well worth exploring the country's fascinating heritage, from its incredible castles, palaces and abbeys to its ancient monuments and sites of interest. And don't miss out on its fantastic cities, towns and villages. Whether you're looking to stay in a lodge, a cottage, or even a castle, you'll never run out of things to do on a holiday in Scotland.

The Scottish Highlands are definitely worth visiting, with their unique blend of dramatic landscapes, spectacular scenery, wonderful architecture and

friendly locals. Visitors to the area will agree there is nothing quite like the magic, mystery and romance of the North of Scotland, making it the perfect place for a short break or a longer escape.

The south of Scotland boasts its own rich heritage with many traditions and unique cultural quirks. The main towns and cities in southern Scotland are Glasgow, Stirling and Edinburgh. Further south you'll find Dumfries and Galloway, Argyll and Bute and the Scottish Borders, whilst further north lies the spectacular Loch Lomond and the Trossachs National Park. Each area has its own individual flavour; visiting one town or region is never enough to get a true taste of Scotland.

visit [www.michaelpaulholidays.co.uk](http://www.michaelpaulholidays.co.uk) or call 01275 371133 to book

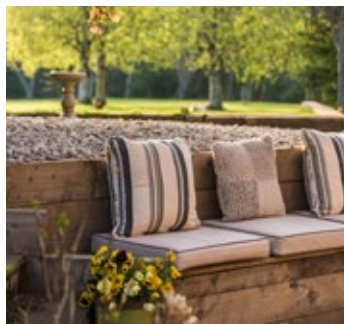
Scotland



## The Old Millhouse

### EDINBURGH

Beautifully secluded and superbly stylish, The Old Millhouse is a luxury 5-star retreat set within acres of landscaped gardens on the banks of the River Esk, with excellent transport links and access to Edinburgh city centre. Exclusive and private, the stunning setting features 5 en suite double bedrooms with super king-sized beds, each styled in a unique and contemporary way. The private garden has the ultimate hot tub in the form of an outdoor swim spa which can be used simply for relaxing or for exercise. The house is well-placed to visit Edinburgh Castle or the Edinburgh Festival, and there's plenty for all the family to do nearby, from sports to history to art. Winner of the Best Self-Catering Experience from the Scottish Thistle Awards 2018, The Old Millhouse also recommends a choice of excellent local caterers and wine experts.



★ **GREAT FOR...**  
Luxury  
Local history  
Getting away from it all

📍 **NEARBY...**  
Edinburgh Castle  
Edinburgh City Centre  
Country sports (Clay shooting, archery etc)



Hot Tub



luxury



countryside

The Old Millhouse



**SPRING**  
prices from

**SUMMER**  
prices from

**AUTUMN**  
prices from

**WINTER**  
prices from

4 Nights

7 Nights

4 Nights

7 Nights

4 Nights

7 Nights

4 Nights

7 Nights

The Old Mill House (Sleeps 10)

£2,200

£3,850

£2,600

£4,200

£2,200

£3,850

£2,200

£3,500



## St Benedict's Abbey

### FORT AUGUSTUS, INVERNESS

Situated in 20 acres of private grounds, the luxurious apartments at St Benedict's Abbey sit on the southern shore of Loch Ness and are perfectly located for exploring the Highland landscapes, offering spectacular views of their unspoilt surroundings.

There's plenty to do on-site here, too, with a variety of sports fields and ball courts, as well as a heated pool and a relaxing steam room and sauna. At the end of a busy day, you can enjoy a delicious meal in the Boathouse Restaurant and unwind in the luxurious Highland Club Lounge.

These apartments are located in the listed gothic buildings that were once Fort Augustus, an English fortification built in 1729, and later became St Benedict's Abbey.



**★ GREAT FOR...**  
On-site amenities  
Cruises and watersports  
Wildlife spotting

**📍 NEARBY...**  
Loch Ness  
Caledonian Canal  
Monadhliath Mountains



tennis



historic



pool

St Benedict's Abbey	SPRING prices from		SUMMER prices from		AUTUMN prices from		WINTER prices from	
	4 Nights	7 Nights	4 Nights	7 Nights	4 Nights	7 Nights	4 Nights	7 Nights
1 Bed Apartment	£705	£1,133	£849	£1,400	£660	£1,110	£495	£823
2 Bed Apartment	£842	£1,263	£1,166	£1,888	£889	£1,400	£640	£960

## Galloway Collection

We offer two great properties in the gorgeous Galloway region of Scotland, whether you're planning for a large get-together or a more romantic escape.

The elegant Craighbitern House is located on the shore of the Solway Firth, on the edge of the village of Sandyhills. It's great for large groups, with a cosy cottage alongside it included in your booking which gives a combined capacity of up to 13 guests.

Looking for a break for two instead? The lovely Rosewall Cottage is situated in the attractive historic village of New Abbey, offering a charming romantic retreat in a beautiful traditional property with plenty of modern touches and amenities.

*Such an amazing place, perfect for a family get together or group of friends, can't recommend enough.*



### GREAT FOR...

Country breaks  
Larger groups  
Romantic getaways



### NEARBY...

South Downs  
Caerlaverock Castle  
RSPB Mersehead  
Caerlaverock Wetland Centre



accessible



large  
groups



historic



Craibitern House, Dalbeattie



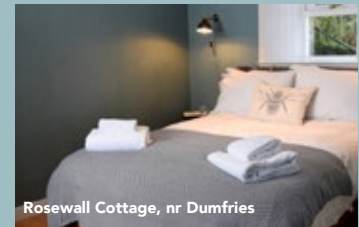
Rosewall Cottage, nr Dumfries



Craibitern House, Dalbeattie




Rosewall Cottage, nr Dumfries



Rosewall Cottage, nr Dumfries



Rosewall Cottage, nr Dumfries

Galloway Collection		SPRING prices from		SUMMER prices from		AUTUMN prices from		WINTER prices from	
		4 Nights	7 Nights	4 Nights	7 Nights	4 Nights	7 Nights	4 Nights	7 Nights
Craibitern House		£1,120	£1,600	n/a	£1,800	£1,120	£1,600	£1,120	£1,600
Rosewall Cottage		£260	£320	£345	£395	£260	£320	£225	£275

# John O'Groats

## CAITHNESS

Famous for being the most northern point on the British mainland, the striking rural scenery of John O'Groats makes for a truly unique getaway. Our comfortable accommodation here is right on the Caithness coastline, offering views over John O'Groats Harbour and the rocky Scottish shores alongside it.

The friendly village offers everything you need for a self-catering holiday, perfect for losing yourself in this beautiful locale. Explore the peaceful Caithness countryside, watch some wonderful wildlife, or hike or cycle along the rugged coastline.



### GREAT FOR...

Walking and cycling  
Coastal scenery  
Wildlife watching



### NEARBY...

Pulteney Distillery  
Dunnet Head Nature Reserve  
Castle & Gardens of Mey



wildlife



pet  
friendly



countryside



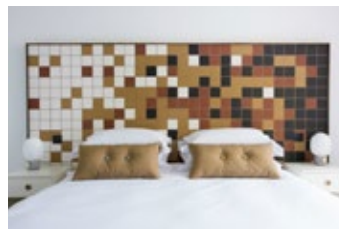
John O'Groats 	SPRING prices from		SUMMER prices from		AUTUMN prices from		WINTER prices from	
	4 Nights	7 Nights	4 Nights	7 Nights	4 Nights	7 Nights	4 Nights	7 Nights
1 Bed Apartment	£493	£789	£493	£789	£493	£789	£493	£789
2 Bed Apartment	£650	£1,034	£663	£1,045	£645	£1,029	£640	£1,024
3 Bed Lodge	£662	£913	£894	£1,220	£558	£770	£454	£627
4 Bed Apartment	£762	£1,210	£769	£1,215	£752	£1,200	£747	£1,195

## Lewis Castle

### ISLE OF LEWIS

For a real taste of luxury in a truly unique setting, Lewis Castle in the Scottish Outer Hebrides cannot be beaten. Located in Stornoway on the Isle of Lewis, this restored 19th-century castle is surrounded by acres of gorgeous landscaped gardens, with a striking exterior constructed in the Gothic Revival style.

The building and its surroundings have a unique historical charm, the perfect setting for a genuinely memorable getaway. The accommodation here boasts a classic feel but without missing out all the modern conveniences you could want.



★ **GREAT FOR...**  
 Unique accommodation  
 Walks in the grounds  
 Exciting events

📍 **NEARBY...**  
 Castle museum  
 Historical sites  
 Abhainn Dearg Distillery



accessible historic countryside

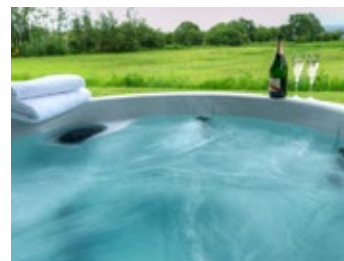
Lewis Castle	BEST PRICE GUARANTEE		SPRING prices from		SUMMER prices from		AUTUMN prices from		WINTER prices from	
	4 Nights	7 Nights	4 Nights	7 Nights	4 Nights	7 Nights	4 Nights	7 Nights		
1 Bed Apartment	£530	£738	£619	£827	£597	£812	£324	£448		
2 Bed Apartment	£447	£617	£764	£1,051	£677	£937	£370	£512		
3 Bed Apartment	£618	£1,255	£1,019	£1,400	£908	£1,255	£522	£722		

## Loch Lomond Lodges

### BALMAHA, STIRLINGSHIRE

The Loch Lomond lodges occupy a special place, right next to the magical Loch Lomond. The winter is as beautiful as the summer when the frost creeps in and the winter sun shines on the lake. Perfect for an idyllic weekend break, every Loch Lomond Lodge features a toasty outdoor hot tub.

Loch Lomond Waterfront is perfect for couples, families and friends who enjoy an outdoorsy type of break. There are hundreds of woodland paths to explore and many secret islands to discover which are only accessible by boat. These comfortable lodges make a perfect place from which to explore everything that Loch Lomond & the Trossachs National Park has to offer.



★ **GREAT FOR...**  
Rural relaxation  
Exploring the loch  
Nature walks

📍 **NEARBY...**  
Buchanan Castle Golf Club  
Loch Lomond Shores mall  
Breweries and distilleries



pet friendly



hot tubs



countryside

Loch Lomond Lodges



	SPRING prices from		SUMMER prices from		AUTUMN prices from		WINTER prices from	
2 Bed Lodge with Hot Tub	4 Nights	7 Nights	4 Nights	7 Nights	4 Nights	7 Nights	4 Nights	7 Nights
	£740	£1,368	£1,113	£2,037	£959	£1,767	£671	£1,218

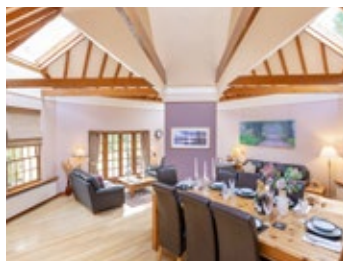


## Lomond Luxury Lodges

### DRYMEN, STIRLINGSHIRE

Another set of fantastic holiday properties close to the sparkling waters of Loch Lomond, these superb, spacious lodges are perfect for a break in the magnificent Loch Lomond & The Trossachs National Park. Each of them comes with their very own hot tub, too, perfect for relaxing on a summer's evening or warming up on a frosty day.

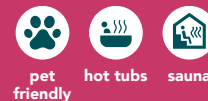
There are countless things to do in this gorgeous area of Scotland, with all sorts of sports and activities to pursue and scenic landscapes to explore.



	SPRING prices from		SUMMER prices from		AUTUMN prices from		WINTER prices from	
	4 Nights	7 Nights	4 Nights	7 Nights	4 Nights	7 Nights	4 Nights	7 Nights
3 Bed Luxury Lodge	£927	£1,557	£1,040	£1,840	£931	£1,651	£822	£1,462

★ **GREAT FOR...**  
Hot tub holidays  
Walking and cycling  
Pony trekking

📍 **NEARBY...**  
Loch Katrine  
Ben Lomond  
Loch Ard waterpark



## Loch Tay Highland Lodges

### HIGHLAND PERTSHIRE

With an unbeatable location on the banks of Loch Tay in the Scottish Highlands, this scenic resort is perfect for relaxing in unspoilt natural surroundings. If you'd rather get active, the on-site activity organisers offer a range of memorable experiences including canoeing on the loch, gorge walking, archery, and more, and there's also a putting green and disc golf course.

You're sure to enjoy a stay in one of these lodges with fantastic views of Loch Tay, many of which have their own hot tub. Larger groups can instead book a stunning 5-bedroom house on the resort, which offers plenty of room to relax as well as a hot tub of its own. And if you're feeling peckish, you can savour a delicious meal at the Bistro Italian restaurant and bar, conveniently located on the resort.



#### GREAT FOR...

Outdoor activities  
Highland scenery  
On-site facilities



#### NEARBY...

Ben Lawers mountain range  
Loch Lomond & The Trossachs  
National Park  
Tay Forest Park



hot  
tubs



bar/  
restaurant



watersports

Loch Tay  
Highland Lodges



	BEST PRICE		SPRING prices from		SUMMER prices from		AUTUMN prices from		WINTER prices from	
	4 Nights	7 Nights	4 Nights	7 Nights	4 Nights	7 Nights	4 Nights	7 Nights		
2 Bed Lodge	£495	£695	£550	£755	£460	£595	£295	£345		
3 Bed Lodge	£625	£995	£815	£1,145	£625	£995	£575	£715		
3 Bed Lodge with Hot Tub	£995	£1,415	£1,195	£1,565	£995	£1,415	£875	£1,115		
3 Bed Lodge with Hot Tub & Sauna	£995	£1,415	£1,195	£1,565	£995	£1,415	£875	£1,115		
5 Bed House with Hot Tub	£1,525	£1,895	£1,745	£1,995	£1,525	£1,895	£1,195	£1,595		



## Braidhaugh Park

### HIGHLAND PERTSHIRE

Braidhaugh Holiday Park is situated on the banks of the River Earn in the glorious Scottish Highlands, close by to the Perthshire market town of Crieff. Whether you'd prefer to hike, cycle or horse-ride through the scenic landscapes, go fishing in the river, or just relax in tranquil surroundings, this is a superb place to stay.

Available to book are a range of comfortable lodges and cosy glamping pods, all of which come with a private hot tub for your enjoyment. On-site amenities include a small shop for daily essentials, a games room with a TV and air hockey table, and a kids' playground.



Braidhaugh Park 	SPRING prices from		SUMMER prices from		AUTUMN prices from		WINTER prices from	
	4 Nights	7 Nights	4 Nights	7 Nights	4 Nights	7 Nights	4 Nights	7 Nights
Glamping Hideout with Hot Tub	£440	£660	£440	£660	£440	£660	£440	£660
1 Bed Lodge with Hot Tub	£375	£645	£450	£745	£375	£645	£350	£500
2 Bed Lodge with Hot Tub	£500	£770	£575	£880	£500	£770	£400	£600

**★ GREAT FOR...**  
Hot tub breaks  
Golfing  
Fishing

**📍 NEARBY...**  
Market town of Crieff  
Glenturret Distillery  
Drummond Castle



hot tubs



countryside



golf

## Portnellan

### CRIANLARICH, STIRLINGSHIRE

Set amidst a private estate in the beautiful Loch Lomond & The Trossachs National Park, with the imposing sight of Ben More looming nearby, a view over the spectacular local lochs, and incredible scenery wherever you look, the luxurious lodges of Portnellan make for a truly glorious Highland escape.

The location is great for hiking, cycling, fishing and boating, with mountain bikes for hire and fishing rods, boats and bike racks available to use for free. Portnellan offers a superb opportunity to explore the Scottish Highlands.



Portnellan	★ BEST PRICE		SPRING prices from		SUMMER prices from		AUTUMN prices from		WINTER prices from	
	4 Nights	7 Nights	4 Nights	7 Nights	4 Nights	7 Nights	4 Nights	7 Nights		
1 Bedroom Lodge	£436	£586	N/A	£586	£436	£513	£357	£419		
2 Bedroom Lodge	£997	£1,172	N/A	£1,172	£760	£894	£623	£733		
3 Bedroom Lodge	£1,115	£1,439	N/A	£1,758	£1,115	£1,312	£935	£1,099		
3 Bedroom Cottage	£920	£1,080	N/A	£1,235	£748	£880	£612	£721		
4 Bedroom Cottage	£1067	£1,255	£935	£1,144	£935	£1,099	£886	£1,041		

#### ★ GREAT FOR...

Hiking  
Fishing  
Boating



#### NEARBY...

Loch Lomond Seaplanes  
Sea Life Loch Lomond  
Loch Lomond Birds of Prey



pet friendly



countryside



fishing

## St Andrews Apartments

### FIFE

St Andrews is known worldwide as the Home of Golf, boasting the world's oldest golf course where the game was first played in the 14th century, as well as many other courses. But there's plenty to this town besides golf, including historical attractions, shopping opportunities, and great beaches. It's also worth exploring the surrounding East Neuk of Fife, with its traditional fishing villages and gorgeous countryside.

We offer several select holiday properties in the St Andrews area that make a perfect place to stay, whatever the reason for your visit.






St Andrews Apartments	SPRING prices from		SUMMER prices from		AUTUMN prices from		WINTER prices from	
	4 Nights	7 Nights	4 Nights	7 Nights	4 Nights	7 Nights	4 Nights	7 Nights
2 Bed Apartment	£350	£500	N/A	£650	£475	£550	£400	£450
3 Bed Apartment	£800	£1,235	£1,350	£1,995	£1,000	£1,700	£800	£1,050



★ **GREAT FOR...**  
 Golfing  
 Heritage  
 Seaside fun

📍 **NEARBY...**  
 St Andrews Links  
 British Golf Museum  
 St Andrews Castle ruins

 beach nearby  
 golf  
 countryside

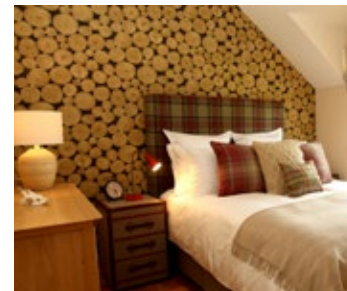
## Hawkswood Country Estate

### FIFE

With spacious luxury accommodation set within a beautiful countryside estate, Hawkswood is the perfect escape for large groups. There's plenty of room for relaxation both indoors and outdoors, and keen golfers in particular will love the on-site golfing facilities and easy access to local courses at nearby St. Andrews, the 'Home of Golf'.

The estate is based in the Scottish hamlet of Peat Inn. With two large, luxurious country homes available to stay in, it's ideal for bigger groups looking for an idyllic getaway amid Scotland's glorious countryside.

Each property comes complete with its own luxurious hydro spa hot tub for guests to enjoy after a busy day.



Hawkswood Country Estate



	SPRING prices from		SUMMER prices from		AUTUMN prices from		WINTER prices from	
	4 Nights	7 Nights	4 Nights	7 Nights	4 Nights	7 Nights	4 Nights	7 Nights
Hawkswood House	£3,479	£5,600	£3,960	£6,930	£3,200	£6,930	£3,000	£5,250
The Roundel	£3,682	£6,300	£4,047	£6,900	£3,275	£5,500	£3,275	£5,250

★ **GREAT FOR...**  
Group holidays  
Golfing  
Relaxing

📍 **NEARBY...**  
St Andrews Cathedral  
Isle of May National Nature Reserve  
Scottish Clay Shooting Centre



hot tubs



golf



large groups

## Sandford Country Cottages

### FIFE

Boasting a prime location in the unspoilt Fife countryside, the accommodation at Sandford House makes the ideal destination for a break in Scotland. Apartments in the main house are available to book, as well as a number of cottages located in the large courtyard.

Built and renovated in the 'Arts and Crafts' architectural style, which puts a focus on traditional craftsmanship, these superb properties offer plenty of authentic rustic charm blended perfectly with modern convenience and comfort. There's plenty of space to enjoy sunny days in the grounds, too, with a 7-acre shared garden with picnic areas and green spaces ideal for a stroll.



**★ GREAT FOR...**  
 Fantastic views  
 Fabulous architecture  
 Country walks

**📍 NEARBY...**  
 Dundee  
 The River Tay  
 St Andrews, the 'Home of Golf'



historic countryside walking

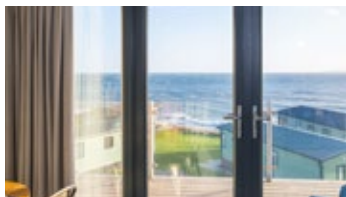
Sandford Country Cottages	BEST PRICE		SPRING prices from		SUMMER prices from		AUTUMN prices from		WINTER prices from	
	4 Nights	7 Nights	4 Nights	7 Nights	4 Nights	7 Nights	4 Nights	7 Nights	4 Nights	7 Nights
1 Bed Apartment	£567	£772	£650	£887	£602	£719	£556	£695		
2 Bed Apartment	£707	£1,010	£784	£1,120	£623	£870	£532	£760		
3 Bed Apartment	£895	£1,278	£1,022	£1,459	£895	£1,278	£735	£1,050		

## Sauchope Links

### FIFE

This relaxing holiday park is situated on the rugged coastline of the East Neuk of Fife, an area of Scotland noted for its beautiful beaches, striking seaside scenery and traditional fishing villages, including the charming harbour settlement of Crail which you can find close by.

Sauchope Links offers a variety of luxury lodges, many with hot tubs and all boasting superb views across the water to the Isle of May in the Firth of Forth. You'll also find a range of fantastic on-site facilities including a heated outdoor pool, an indoor rec room, a convenient shop, and a play area for the kids.



Sauchope Links 	SPRING prices from		SUMMER prices from		AUTUMN prices from		WINTER prices from	
	4 Nights	7 Nights	4 Nights	7 Nights	4 Nights	7 Nights	4 Nights	7 Nights
1 Bed Lodge	£350	£650	£450	£750	£420	£635	£270	£400
Beach Hideout with Hot Tub - Sleeps 4	£440	£660	£440	£660	£440	£660	£440	£660
2 Bed Deluxe Beach Hut with Hot Tub	£480	£720	£480	£720	£480	£720	£480	£720
Retreat Lodge with Hot Tub - Sleeps 3	£600	£900	£600	£900	£600	£900	£600	£900
2 Bed Lodge with Hot Tub	£450	£750	£520	£830	£350	£640	£350	£595

★ **GREAT FOR...**  
Hot tub holidays  
Coastal views  
On-site facilities

📍 **NEARBY...**  
St Andrews, the 'Home of Golf'  
East of Neuk fishing villages  
'Scotland's Secret Bunker' Cold War museum



beach nearby



hot tubs



pool




## Taymouth Marina

### KENMORE, ABERFELDY

Taymouth Marina offers a range of luxurious accommodation located on the banks of the beautiful Loch Tay in the Scottish Highlands, with spectacular sights and beautiful natural surroundings. Some of the properties even boast added bonuses like hot tubs and private terraces and balconies overlooking the loch and the hills and mountains beyond.




Make the most of your Lochside location with a visit to the Watersports and Activity Centre, where you can get out on the water without delay. And where better to relax after a day of excitement than the Hot Box, one of the UK's biggest saunas, with incredible views across the Loch – or perhaps you'd prefer a tasty meal at the on-site waterside restaurant, serving up delicious local produce.



Taymouth Marina 	SPRING prices from		SUMMER prices from		AUTUMN prices from		WINTER prices from	
	4 Nights	7 Nights	4 Nights	7 Nights	4 Nights	7 Nights	4 Nights	7 Nights
1 Bed Apartment	£546	£849	£692	£849	£692	£849	£692	£849
2 Bed Apartment	£770	£1,199	£770	£1,199	£770	£1,199	£770	£1,199
3 Bed House	£1,142	£1,750	£1,142	£1,750	£1,142	£1,750	£1,142	£1,750

**★ GREAT FOR...**  
 Watersports  
 Luxury dining  
 Spacious sauna

**📍 NEARBY...**  
 Highland Safaris  
 Taymouth Castle  
 Dewar's Aberfeldy Distillery

 **pet friendly**  **watersports**  **hot tubs**



If you're looking for gorgeous landscapes, whether for walking, cycling, or just appreciating the glorious surroundings, you'll find yourself spoilt for choice in Somerset. The county contains England's first Area of Outstanding Natural Beauty, the Quantock Hills, as well as the Mendip Hills Area of Outstanding Natural Beauty, much of Exmoor National Park, and the Blackdown Hills on its border with Devon. Even outside these areas, the scenic Somerset Levels and Moors landscape of wetlands gives much of the county its own unique character.

The coastal scenery is equally superb, and well worth exploring along a stretch of the England Coast Path.

You'll find some of the highest seafront cliffs in England in Somerset, as well as many splendid beaches - and why not pay a visit to the pier in the seaside town of Weston-super-Mare?

Somerset is also well known for its traditional foods and beverages. If you're a fan of cider, Somerset is home to some of the biggest producers around, including Thatchers, Brothers, and Blackthorn, as well as many small independent makers, many of which offer tours and tasting experiences. It's also famous for its cheeses, being the home of the ever-popular cheddar but also offering countless others.





## Dillington Estate

### ILMINSTER

Dillington Estate consists of 2,500 acres of beautiful parkland, where you'll have two carefully renovated holiday cottages to choose from. These listed properties offer a comfortable blend of authentic historic ambience and modern convenience, and with the scenic Somerset landscape surrounding you, it's the ideal location for a countryside getaway.

Unwind in beautiful surroundings by exploring the farmland and woods of the Dillington Estate, whether by foot or on a bike. When you want to venture further afield, you'll find the estate's location offers easy access to other scenic landscapes such as the Blackdown Hills Area of Outstanding Natural Beauty, the Somerset Levels, and the Jurassic Coast.



★ **GREAT FOR...**  
Country walks  
Cycling trails  
Historical attractions

📍 **NEARBY...**  
Museum of Somerset  
Fleet Air Arm Museum  
Somerset Cider Brandy Co



romantic



luxury



countryside

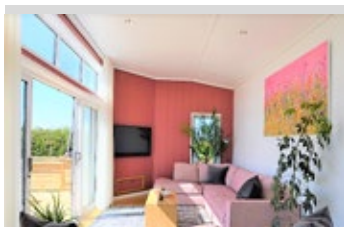
Dillington Estate	BEST PRICE		SPRING prices from		SUMMER prices from		AUTUMN prices from		WINTER prices from	
	4 Nights	7 Nights	4 Nights	7 Nights	4 Nights	7 Nights	4 Nights	7 Nights	4 Nights	7 Nights
3 Bed Cottage	£1,200	£1,650	£1,376	£1,885	£1,120	£1,520	£1,120	£1,520	£1,120	£1,520

## Strawberryfield Park

### CHEDDAR

If you're looking for a touch of luxury while enjoying peaceful natural surroundings, this resort's high-end lodges offer stylish and spacious accommodation, each with their own private hot tub and an outdoor decking area so you can fully immerse yourself in the beautiful scenery. Perfect for a romantic break or a chance to get away from it all, you won't lack for home comforts when you stay here.

Strawberryfield Park is surrounded by unspoilt countryside, sitting on the border of the Somerset Levels and the Mendip Hills Area of Outstanding Natural Beauty, just a few miles from Cheddar Gorge – the ideal location to sit back and relax.



#### GREAT FOR...

Food and drink  
Watching wildlife  
Natural beauty



#### NEARBY...

Mendip Hills Area of  
Outstanding Natural Beauty  
Cheddar Gorge  
Wokey Hole Caves




romantic



luxury



countryside

Strawberryfield Park 	SPRING prices from		SUMMER prices from		AUTUMN prices from		WINTER prices from	
	4 Nights	7 Nights	4 Nights	7 Nights	4 Nights	7 Nights	4 Nights	7 Nights
'Combe Hay' 1 Bed Lodge with Hot Tub	£463	£751	£675	£1,125	£461	£769	£400	£667
'Batcombe Hollow' 1 Bed Lodge with Hot Tub	£546	£849	£712	£1,187	£491	£799	£413	£689
'Cheddar Pink' 2 Bed Lodge with Hot Tub	£805	£985	£981	£1,508	£593	£891	£434	£723
'Burrington' 2 Bed Lodge with Hot Tub	£651	£826	£981	£1,508	£516	£860	£434	£723

## Home Farm Holiday Park

### BURNHAM-ON-SEA

For a fabulous family holiday, book a stay in a high-end glamping pod at Home Farm Holiday Park in Somerset, with endless things to do for all ages.

Get active with indoor and outdoor swimming pools, a five-a-side football pitch, two kids' play areas, and a well-equipped gym. Unwind in the sauna, jacuzzi, and steam room, or while reeling in a big one on the fishing lake. The Nite Owl entertainment complex has live shows, two amusement arcades, and a handy eatery, and there's also an on-site supermarket. And as though all that wasn't enough, it's just a five-minute drive to Burnham-on-Sea if you fancy a trip to the seaside.



★ **GREAT FOR...**  
Family holidays  
On-site facilities  
Seaside trips

📍 **NEARBY...**  
Burnham-on-Sea  
Apex Leisure & Wildlife Park  
Brean Down



beach nearby



pools



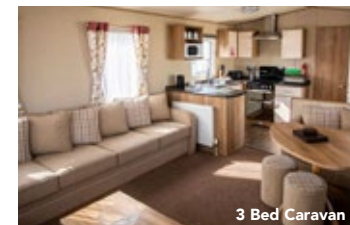
fishing



2 Bed Glamping Pod



Home Farm Holiday Park	BEST PRICE		SPRING prices from		SUMMER prices from		AUTUMN prices from		WINTER prices from	
	4 Nights	7 Nights	4 Nights	7 Nights	4 Nights	7 Nights	4 Nights	7 Nights	4 Nights	7 Nights
2 Bed Glamping Pod	£420	£755	£620	£1,085	£420	£630	£420	£630	£420	£630
2 Bed Caravan	£400	£700	£600	£1,050	£400	£700	£400	£700	£400	£700
3 Bed Caravan	£440	£770	£640	£1,120	£440	£770	£440	£770	£440	£770



3 Bed Caravan



Located on England's east coast, Suffolk is a charming county that's ideal if you're looking for a peaceful break. Dotted with medieval wool towns and pretty villages, there's plenty to do and see here.

It's perfect for a relaxing holiday by the sea, with much of its coastline being part of the Suffolk Coast and Heaths Area of Outstanding Natural Beauty. There's a variety of towns and villages

to visit along the coast, including Lowestoft, with its award-winning sandy beach and easy access to the Broads National Park, and Felixstowe, a traditional seaside town complete with waterfront promenade.

The inland countryside is gorgeous too. Stour Valley and Dedham Vale are known as 'Constable Country', as the landscapes featured in many of the paintings of John Constable. The Shotley Peninsula, located between the River Stour and the River Orwell, offers idyllic surroundings and plenty of opportunities to get out on the water.

And Thetford Forest, in the area known as the Brecks, is a fantastic natural place to explore.

Beyond that, Suffolk has plenty of other attractions and appeal that make it worth a visit. Head to Newmarket, the Home of Horseracing, discover the historical gem that is Bury St Edmunds, or spend a day in the bustling ancient town of Ipswich, right on the waterfront.



## Suffolk Collection

The county of Suffolk is a superb place for a holiday spent relaxing, its natural beauty accentuated by 50 miles of gorgeous coastline, and its historical villages and towns giving an insight into its rich heritage.

We offer over 50 properties in this gorgeous county, ranging from classic cottages with a charming traditional ambience to more contemporary accommodation with all the modern conveniences you could want. If you're looking to get away from it all and spend a little time exploring Suffolk, we're sure we can find the perfect place to accommodate you.



Thatcher's Cottage, Stoke-by-Nayland



Woodland Retreat Shepherd's Hut, Brundish



Rose Barn, Stoke-by-Nayland



Myrtle Cottage, Friston



The Clockhouse, Sibton



Russet, Stoke-by-Nayland



The Listening Station, Southwold



Moat Cottage, Sibton



Moat Cottage, Sibton



The Listening Station, Southwold

★ **GREAT FOR...**  
Local history  
Coastal breaks  
Getting away from it all

📍 **NEARBY...**  
Bury St Edmunds  
Sutton Hoo  
Villages and market towns



pet friendly



hot tubs



pool

Suffolk Collection



	SPRING prices from		SUMMER prices from		AUTUMN prices from		WINTER prices from	
	4 Nights	7 Nights	4 Nights	7 Nights	4 Nights	7 Nights	4 Nights	7 Nights
1 Bed Cottage	£461	£600	£573	£783	£461	£600	£399	£518
2 Bed Cottage	£475	£682	£590	£742	£561	£682	£410	£532
3 Bed Cottage	£485	£631	£791	£980	£700	£917	£485	£631
4 Bed Cottage	£735	£934	£1,293	£1,950	£1,150	£1,517	£787	£1,031



Wales is heaven for any holidaymaker looking to get away from it all, known for its lush green countryside, stunning mountains, and magnificent coastline, with the North Wales region offering some especially spectacular examples.

Spend a relaxing break exploring miles of unspoilt beaches and visiting the countless number of attractions and amusements. One of

the best ways to experience the Welsh coastal scenery is by foot on the Wales Coast Path, which leads through quaint villages, up soaring cliffs, and past beautiful beaches, and covers the entire country. The coast is ideal for practising water sports such as kayaking, windsurfing and sailing. One particularly fantastic spot is found at Nefyn Bay, a two-mile stretch of sandy beach with excellent conditions for wind or kite surfing.

Incredible mountains also attract lots of visitors to the area. Snowdon, the highest mountain in Wales, and

the Snowdonia National Park entice plenty of climbers, hikers and nature enthusiasts looking for adventure. However, if you're not quite in the mood for climbing a mountain, a great way to see Snowdon is to take the Snowdon Mountain Railway. The train travels all the way up to the summit, into the clouds, where you can experience spectacular panoramic vistas – an ideal way to get a bird's-eye view of the region's magnificent landscapes.





## Brynteg Coastal & Country Retreat

### SNOWDONIA

Brynteg Coastal & Country Retreat is a lively resort nestled in the foothills of Snowdonia, with easy access to the mountainous national park as well as the Welsh coast.

You'll never be short of things to do at Brynteg, with a range of activities going on the whole year round. There's also an indoor swimming pool, a gym, and a children's play area, as well as a spa that's perfect for relaxation and two great restaurants for a delicious meal at the day's end.



Brynteg Coastal & Country Retreat			SPRING		SUMMER		AUTUMN		WINTER	
			prices from		prices from		prices from		prices from	
	4 Nights	7 Nights	4 Nights	7 Nights	4 Nights	7 Nights	4 Nights	7 Nights	4 Nights	7 Nights
3 Bed Luxury Lodge	£560	£984	£1,160	£1,784	£640	£1,384	£448	£888		
2 Bed Gold Caravan	£252	£480	£600	£904	£328	£544	£216	£424		
3 Bed Gold Caravan	£317	£553	£675	£1,032	£366	£618	£252	£496		
2 Bed Classic Caravan	£256	£424	£504	£670	£288	£464	£216	£384		
3 Bed Classic Caravan	£344	£432	£510	£800	£292	£472	£226	£392		

**★ GREAT FOR...**  
 Activities and events  
 Swimming and sports  
 Relaxing spa treatments

**📍 NEARBY...**  
 Snowdon Mountain Railway  
 Canaerfon Castle  
 Greenwood Forest Park



child friendly



hot tubs



pool



bar / restaurant

## Llyn Peninsula Cottages

### GWYNEDD

Situated in North Wales, on the border of Nefyn Bay, the Llyn Peninsula Cottages occupy a beautiful location. The properties on this site were originally farm buildings and have been converted into stylish and elegant holiday cottages, decorated in a modern country style.

Very rarely can you find the mix of coastal and mountainous terrain offered at Llyn Peninsula. Every cottage has its own sea view across the magnificent scenery and picturesque waters of Nefyn Bay.



*"The property was everything we expected and more besides. Everything we needed for a relaxing break was there."*



Llyn Peninsula Cottages	SPRING prices from		SUMMER prices from		AUTUMN prices from		WINTER prices from	
	4 Nights	7 Nights	4 Nights	7 Nights	4 Nights	7 Nights	4 Nights	7 Nights
1 Bed Cottage	£451	£755	N/A	£1,233	£451	£623	£451	£623
2 Bed Cottage	£588	£813	£1,018	£1,406	£734	£1,014	£588	£813
3 Bed Cottage	£647	£894	£1,134	£1,657	£809	£1,118	£647	£894
4 Bed Cottage	£1,060	£1,464	N/A	£2,344	£849	£1,298	£849	£1,173

★ **GREAT FOR...**  
Visiting the beach  
Golfing  
Hiking and cycling

📍 **NEARBY...**  
Snowdonia National Park  
Criccieth Castle  
Cwrw Llyn Brewery



pet  
friendly



luxury



log fire

visit [www.michaelpaulholidays.co.uk](http://www.michaelpaulholidays.co.uk) or call **01275 371133** to book

*Wales*





Yorkshire's beautiful and often dramatic scenery brings thousands of visitors to the region who arrive every year to enjoy a long weekend, summer holiday or a short break in the magnificent Northern countryside. Affectionately known to the locals as 'God's own Country', the county has a unique charm of its own.

As the UK's largest county, Yorkshire has a diverse cultural and physical landscape. Urban areas such as Leeds, Bradford, Sheffield and Hull contrast with the rural North York Moors, Yorkshire Dales and Yorkshire Wolds.

A Yorkshire cottage holiday is a great choice and is sure to restore and revitalise. You will want to return again and again.

There are plenty of accommodation options, from traditional holiday cottages such as The Barn at Rigg End to contemporary self-catering lodges such as our Yorkshire Dales Eco Lodges. No matter what kind of holiday let you're searching for, you're sure to find something to suit you. Our Eco Lodges are dog friendly so don't forget to bring your pet pooch with you!

The Barn at Rigg End is near Pickering and is one of our premier properties. It has been extensively renovated to provide a fantastic experience for up to six people in three bedrooms. You can even bring your horse as grazing is available on site.



## The Barn at Rigg End

PICKERING

Exclusive to Michael Paul Holidays, The Barn at Rigg End offers a secluded rural getaway set amidst the wild beauty of the North York Moors National Park. With sweeping views of the scenic countryside surroundings, the location offers the perfect spot from which to explore the moors, with plenty of brilliant walking and cycling routes beginning right outside your door. It's also a great home base for exploring the rest of Yorkshire, with the historic market town of Pickering within easy reach.

The property itself is a charming and unique cottage constructed from traditional Yorkshire stone. There are 3 comfortable bedrooms on the ground floor, and upstairs is a spacious living room opening onto a balcony.



**★ GREAT FOR...**  
Exploring the moors  
Walking and cycling  
Stunning views

**📍 NEARBY...**  
North Yorkshire Moors Railway  
Pickering Castle  
Flamingo Land



horse friendly



countryside walking



The Barn at Rigg End



**SPRING**  
prices from

**SUMMER**  
prices from

**AUTUMN**  
prices from

**WINTER**  
prices from

4 Nights

7 Nights

4 Nights

7 Nights

4 Nights

7 Nights

4 Nights

7 Nights

3 Bed Barn Conversion

£786

£889

£1,008

£1,365

£764

£889

£541

£747

# Bowland Fell Park

## WIGGLESWORTH

This peaceful holiday park is situated on the edge of the Forest of Bowland Area of Outstanding Natural Beauty, right next to the Yorkshire Dales National Park. With gorgeous unspoilt landscapes all around you, it's an ideal holiday destination for anyone who loves exploring the countryside and enjoying the spectacular views. This really is a place to get away from it all and experience everything this glorious county has to offer.

Bowland Fell offers a range of luxurious accommodation including lodges, caravans, and even apartments, so there's something to suit all needs. The resort has plenty of on-site facilities, including an indoor swimming pool, outdoor children's play areas, and a well-stocked farm shop. There's even a traditional pub, the Crowtrees Inn, which serves real ale and traditional, locally sourced meals.



Bowland Fell Park	BEST PRICE		SPRING prices from		SUMMER prices from		AUTUMN prices from		WINTER prices from	
	4 Nights	7 Nights	4 Nights	7 Nights	4 Nights	7 Nights	4 Nights	7 Nights		
Luxury Caravan 2 Bed (Sleeps 6)	£196	£245	£396	£475	£150	£189	£110	£149		
Luxury Caravan 3 Bed (Sleeps 8)	£207	£254	£431	£505	£170	£206	£130	£161		
Luxury Plus Caravan 2 Bed (Sleeps 4)	£207	£245	£413	£487	£148	£188	£130	£179		
Luxury Plus Caravan 3 Bed (Sleeps 6)	£235	£310	£445	£529	£168	£229	£152	£229		
Superior Caravan 2 Bed (Sleeps 6)	£235	£310	£455	£536	£197	£256	£152	£212		
Superior Caravan 3 Bed (Sleeps 8)	£265	£329	£588	£588	£274	£274	£230	£255		
Foresters Lodge (Sleeps 6)	£314	£566	£809	£1,007	£310	£490	£251	£386		
2 Bed Apartment (Sleeps 4)	£278	£348	£487	£625	£264	£348	£233	£320		
3 Bed Apartment (Sleeps 6)	£329	£405	£560	£726	£302	£405	£269	£367		

**GREAT FOR...**  
Country walks  
Stunning views  
On-site pub

**NEARBY...**  
Gisburn Forest  
Bowland Brewery  
Bolton Abbey



pool   countryside   walking

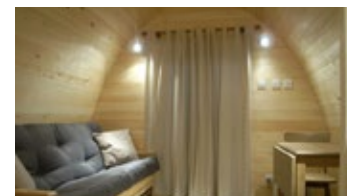
## Littondale

### ARNCLIFFE

If you're looking for a holiday that's a bit different, why not try a relaxing break in one of our stylish glamping pods, located amid the unspoilt scenery of the Yorkshire Dales?

Offering modern convenience and comfort, with free electricity and heating in each pod, while still allowing for the fantastic feeling of immersing yourself in nature, this 'glamping' experience really does offer the best of both worlds. This location, nestled in a tranquil valley, is particularly stunning, with the rugged Yorkshire landscape surrounding you.

*"The site is immaculate and the pods have been positioned very well... as a family we had an amazing break away"*



★ **GREAT FOR...**  
Hiking  
Cycling  
Rural surroundings

📍 **NEARBY...**  
Yorkshire Dales  
Bolton Castle  
Local villages



pet friendly



countryside



glamping

Littondale	BEST PRICE		SPRING prices from		SUMMER prices from		AUTUMN prices from		WINTER prices from	
	4 Nights	7 Nights	4 Nights	7 Nights	4 Nights	7 Nights	4 Nights	7 Nights		
1 Bed Mega Pod	£190	£305	£419	£686	£206	£305	£175	£267		



## Rawcliffe House Farm

### PICKERING


If you're looking to relax in idyllic rural surroundings, Rawcliffe House Farm is an ideal place for a break. With a superb range of 18th-century holiday properties located on the North York Moors, this place really does let you get away from it all.



Explore the rugged moorland, learn about the history and heritage of the area, or just relax beneath the open skies. And if you want a break from all the tranquillity, you're just 6 miles from the popular market town of Pickering and around 20 miles from York.



*"The cottage was spotless and very well equipped, everything you could want for a relaxing week".*

Rawcliffe House Farm 	SPRING prices from		SUMMER prices from		AUTUMN prices from		WINTER prices from	
	4 Nights	7 Nights	4 Nights	7 Nights	4 Nights	7 Nights	4 Nights	7 Nights
1 Bed Studio	£304	£542	£304	£542	£304	£542	£304	£542
1 Bed Cottage	£441	£551	£441	£551	£441	£551	£441	£551
2 Bed Cottage	£660	£660	£660	£660	£660	£660	£660	£660
3 Bed Cottage	£772	£869	£992	£1,089	N/A	£869	N/A	£869

**★ GREAT FOR...**  
Exploring the moors  
Nature watching  
Hiking trails

**📍 NEARBY...**  
Scarborough, Pickering & Helmsley castles  
North Yorkshire Moors Railway  
Flamingo Land theme park & zoo



accessible



WiFi available



countryside



## Yorkshire Dales Eco-Lodges

### RICHMOND

Experience bespoke accommodation near the Yorkshire Dales, combining contemporary luxury and eco-friendly living. Situated on the gateway to the Yorkshire Dales National Park not far from the town of Richmond, these luxurious custom-designed timber eco-lodges overlook some of the most wild and rugged landscapes in North Yorkshire.

This resort is perfect for guests looking for some space and privacy with good local pubs and amenities nearby. It's perfect for long walks in the country and exploring the fascinating shops and historic attractions of the town of Richmond.

*"We were looking for somewhere for a bit of peace and quiet and relaxation and that's exactly what we got. I can not recommend this place enough, everything was perfect"*



Yorkshire Dales Eco-Lodges	SPRING prices from		SUMMER prices from		AUTUMN prices from		WINTER prices from	
	4 Nights	7 Nights	4 Nights	7 Nights	4 Nights	7 Nights	4 Nights	7 Nights
2 Bed Eco Lodge	£510	£773	£841	£1,163	£510	£751	£410	£606
3 Bed Eco Lodge	£680	£1,026	£1,120	£1,547	£680	£939	£533	£795



**★ GREAT FOR...**  
Country walks  
Stunning views  
Relaxing in privacy

**📍 NEARBY...**  
Yorkshire Dales National Park  
Richmond Castle  
River Swale

**pet friendly** **countryside** **log fire**

Michael Paul Holidays is always adding new, hand-picked holiday homes to our collection. Give us a call or take a look at our website for the latest properties and lowest prices

BOOK ONLINE AT  
[michaelpaulholidays.co.uk](http://michaelpaulholidays.co.uk)  
OR CALL  
**01275 371133**

OFFICE USE

**CAT**

